



AUGUST 2001

Final
Issue

6201.1

LABOUR FORCE

NEW SOUTH WALES AND
AUSTRALIAN CAPITAL TERRITORY

EMBARGO: 11:30AM (CANBERRA TIME) MON 29 OCT 2001

CONTENTS

	<i>page</i>
Notes	2
SUMMARY OF FINDINGS	
New South Wales	3
Australian Capital Territory	7
LIST OF TABLES AND GRAPHS	
New South Wales	10
Australian Capital Territory	11
INFORMATION	
Explanatory notes	50
Appendix:	
Supplementary topics	55
Regions of NSW and ACT	56
Regions of NSW and ACT — maps	61
Technical note: data reliability	62
Standard errors	65

- For further information about these and related statistics, contact Jill Tomlinson on Sydney 02 9268 4123 or the National Information and Referral Service on 1300 135 070.

NOTES

FORTHCOMING ISSUES

ISSUE (Quarter)

EXPECTED RELEASE DATE

Final issue

ABOUT THIS PUBLICATION

This publication contains estimates of the civilian labour force in New South Wales (NSW) and the Australian Capital Territory (ACT) derived from the Labour Force Survey (LFS) component of the Monthly Population Survey, which is conducted on a sample basis throughout Australia. Explanatory notes for data contained in this publication can be found on page 50. Care should be taken in the interpretation of month-to-month movements in the estimates. Survey estimates are subject to sampling and non-sampling variability as explained in the Technical note on data reliability on page 62.

CHANGES THIS MONTH

The April 2001 Labour Force Survey was conducted using a redesigned questionnaire containing additional data items and some minor definitional changes. Although the impact on core labour force series has been minor, revisions have been made to estimates previously published in this publication to ensure continuity. The revised series were initially released on 3 May 2001, and cover the period April 1986 to March 2001. Information Paper: *Implementing the Redesigned Labour Force Survey Questionnaire* (Cat. no. 6295.0) contains further information about the questionnaire changes and the revised series.

For details on the content of the redesigned questionnaire, see Information Paper: *Questionnaires Used in the Labour Force Survey* (Cat. no. 6232.0), released on 10 May 2001.

SYMBOLS AND OTHER USAGES

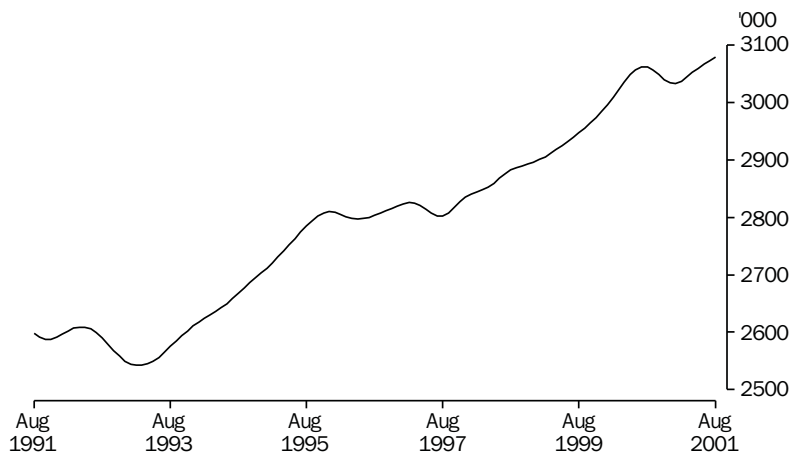
A	Area
C	City
MSR	Major Statistical Region
n.e.c.	Not elsewhere classified
SD	Statistical Division
SR	Statistical Region
SRS	Statistical Region Sector
*	Subject to sampling variability too high for most practical purposes. See the Technical note on data reliability.
. .	Not applicable
—	Nil or rounded to zero (including null cells)

Gregory W. Bray
Regional Director
New South Wales

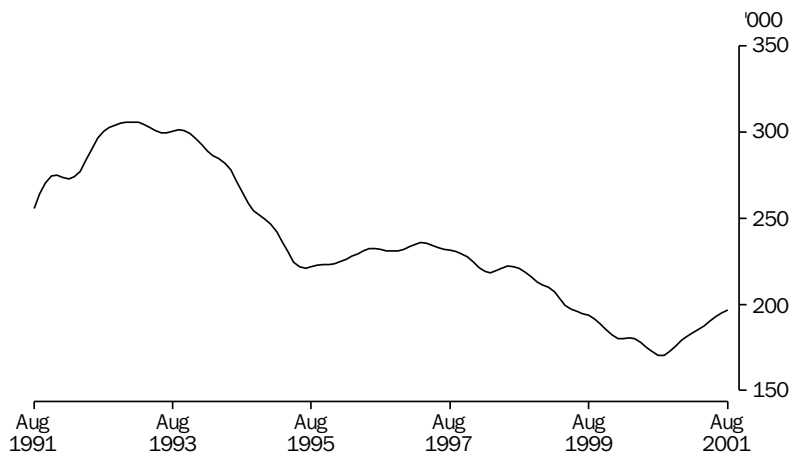
SUMMARY OF FINDINGS — NEW SOUTH WALES

TREND ESTIMATES

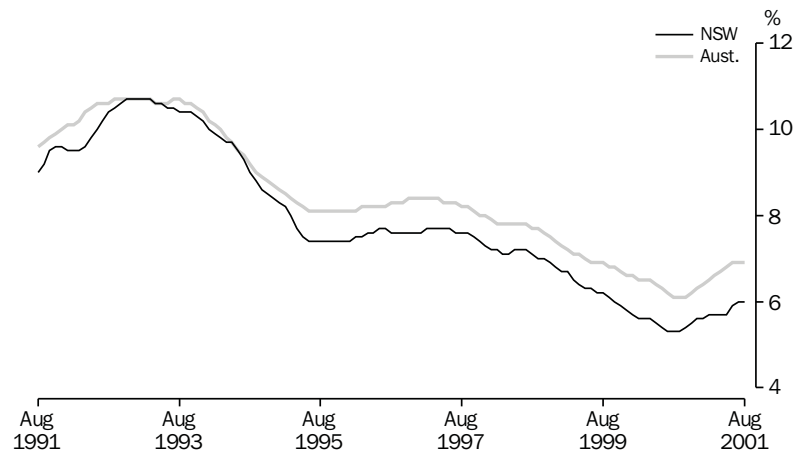
Employed persons The trend estimate of employed persons rose steadily from July 1997 to reach a peak of 3,062,100 in July 2000. It then declined to 3,033,300 in January 2001 before rising again to reach 3,079,200 in August 2001.



Unemployed persons The trend estimate of unemployed persons in NSW reached a low of 170,400 in August and September 2000. It has risen steadily since then, however, and reached 196,500 in August 2001.



Unemployment rate The trend unemployment rate in NSW reached a low of 5.3% between July and September 2000. Since then it has risen to reach 6.0% in July and August 2001.



Participation rate and labour force The trend estimate of the participation rate in NSW reached a low of 62.1% in December 2000 and January 2001, but has risen steadily since then to reach 62.9% in August 2001.

The trend estimated labour force in NSW declined throughout the latter half of 2000 but rose again this year and reached 3,275,700 in August 2001.

SEASONALLY ADJUSTED ESTIMATES

The seasonally adjusted estimate of employment in NSW fell during the second half of 2000, reaching 3,028,300 in November 2000. It has risen since then to reach 3,095,200 in August 2001. The seasonally adjusted estimate of the number of unemployed reached a low of 167,100 in July 2000 but has also risen since then and reached 195,900 in August 2001. The seasonally adjusted estimate of the unemployment rate has been rising since August 2000 and reached 6.0% in August 2001.

REGIONS OF NSW

While the Labour Force Survey (LFS) is designed primarily to produce reliable estimates at the national and State/Territory level, it also delivers estimates for a number of regions within States. As with national and State estimates, regional labour force estimates are subject to sampling error. Since estimates for regions are components of corresponding estimates at the State level — and are thus based on a considerably smaller sample size — they are subject to higher relative standard errors. Care should therefore be taken in interpretation of regional estimates, particularly month-to-month movements.

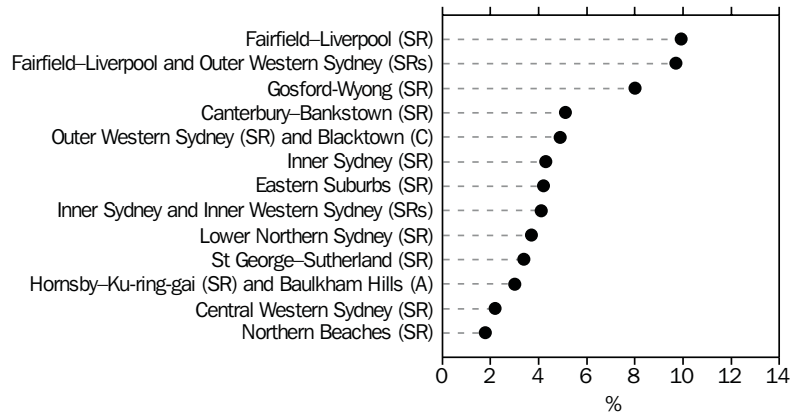
Sydney There were 2,045,400 employed people in the Sydney Major Statistical Region (MSR) in August 2001, where the unemployment rate was 4.9%.

Regional unemployment rates within the Sydney MSR in August 2001 ranged from 1.8% in Northern Beaches Statistical Region (SR) to 9.9% in Fairfield–Liverpool SR. Participation rates varied from 54.7% in Central Western Sydney SR to 71.1% in Inner Sydney SR.

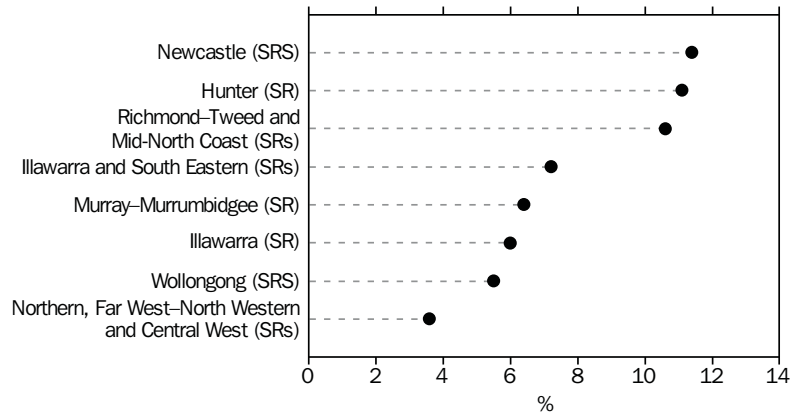
Balance of NSW There were 1,005,600 employed people in Balance of NSW MSR in August 2001, where the unemployment rate was 8.0%.

Unemployment rates ranged from 5.5% in Wollongong SRs to 11.4% in Newcastle Statistical Region Sector (SRS). Participation rates varied from 56.2% in Richmond–Tweed and Mid North Coast SRs to 63.0% in Murray–Murrumbidgee SR.

UNEMPLOYMENT RATE, SYDNEY MSR, AUGUST 2001



UNEMPLOYMENT RATE, BALANCE OF NSW MSR, AUGUST 2001



INDUSTRY AND
OCCUPATION

The industry with the highest employment in August 2001 was Retail trade with 447,500 persons (14.7% of total employed persons in NSW) while the industry with the lowest employment was Mining with 19,800 persons (0.6% of total employed persons).

The major occupation group with the highest employment in August 2001 was Professionals with 596,000 persons (19.5% of total employed persons) while the occupation group with the lowest employment was Advanced clerical and service workers with 149,300 persons (4.9% of total employed persons).

AGE

The unemployment rate at August 2001 decreased with age from 15.4% for 15–19 year olds to 4.0% for the 45–54 years age group. The rate for the age group 55 years and over was 3.2%.

BIRTHPLACE

In August 2001, the unemployment rate for Australian-born people in NSW was 6.1%. For those born overseas in the main English-speaking countries the rate was 4.4% while for those born in other countries it was 6.0%.

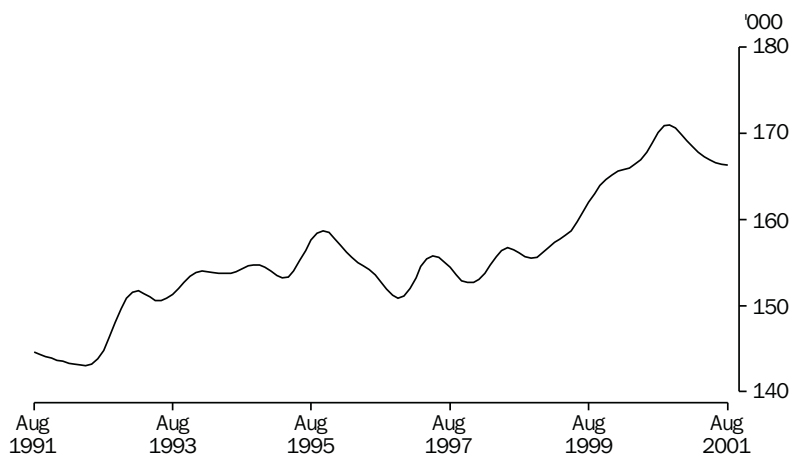
DURATION OF
UNEMPLOYMENT

In August 2001, the average (mean) duration of unemployment was 49.3 weeks. Of those who were unemployed, more than 15% had been unemployed for two years or more.

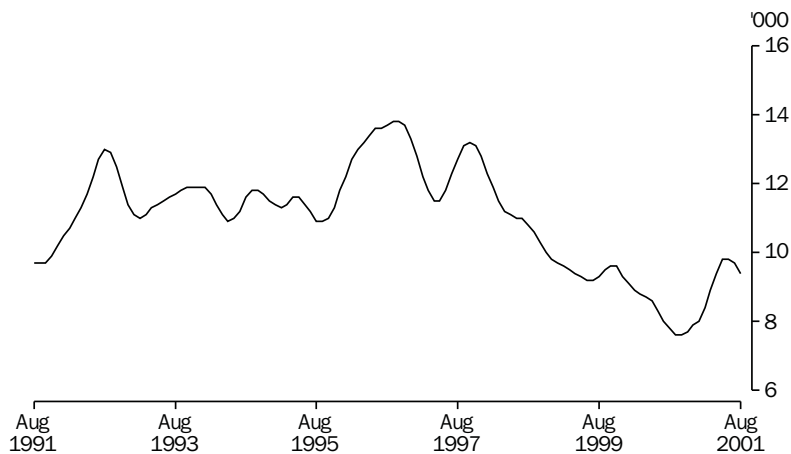
SUMMARY OF FINDINGS — AUSTRALIAN CAPITAL TERRITORY

TREND ESTIMATES

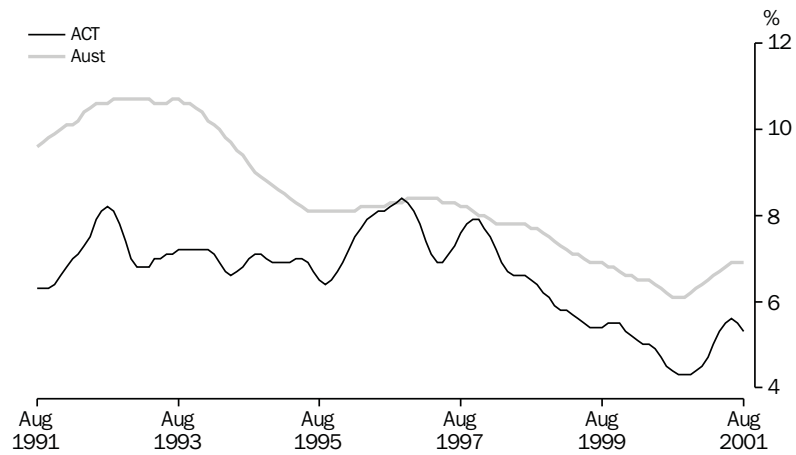
Employed persons The trend estimate of employed persons in the ACT rose throughout most of 2000. Since October 2000, however, it has declined steadily and reached 166,300 in August 2001.



Unemployed persons The trend estimate of unemployment in the ACT moved downwards throughout most of 2000, reaching 7,600 in September and October. Since then it has risen again to reach 9,400 in August 2001.



Unemployment rate The trend unemployment rate in the ACT reached a low of 4.3% between September and November 2000. Since then it has risen to reach 5.3% in August 2001.



Participation rate and labour force The ACT trend participation rate reached a high of 73.4% in September and October 2000 but has since fallen slightly to reach 71.8% in August 2001. The trend labour force estimate was 175,700 in August 2001.

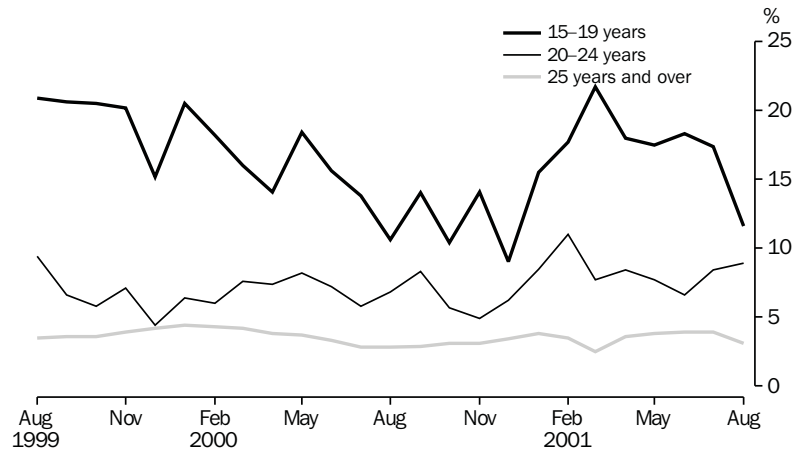
INDUSTRY AND OCCUPATION

There were 36,500 people employed in Government administration and defence in the ACT in August 2001. This industry sector accounted for 22.0% of total employment in the ACT in August 2001. Property and business services accounted for 16.4% of total employment.

For the year ending August 2001, the largest occupation group in the ACT was Professionals. This group had an average of 46,300 employed persons over the year, constituting 27.9% of the total number of employed persons.

AGE

In August 2001, the proportion of employed people working part-time in the ACT ranged from 72.9% of 15–19 year olds to 21.9% of those aged 25 years and over. The average weekly hours worked by employed persons in the age group 15–19 years was 19.0 while those in the age group 25 years and over worked an average of 35.6 hours. The unemployment rates for these age groups were 11.6% and 3.1%, respectively.



DURATION OF UNEMPLOYMENT

The average duration of unemployment in the ACT in August 2001 was 46.2 weeks. For the 15-19 age group the average duration was 15.1 weeks while for those aged 25 and over the average was 59.7 weeks.

LIST OF TABLES AND GRAPHS

NEW SOUTH WALES		Page
Tables	Labour force status:	
	1 Original series	12
	2 Seasonally adjusted and trend series	14
	3 Age, August 2001	19
	4 Persons aged 15–24 by full-time educational attendance, August 2001	20
	5 Family status, August 2001	21
Graphs	Labour force status:	
	Trend series, August 1991–August 2001:	18
	Employed males	18
	Employed females	18
	Unemployed males	18
	Unemployed females	18
	Male unemployment rate	18
	Female unemployment rate	18
	Male participation rate	18
	Female participation rate	18
Tables	Employed persons:	
	6 Status in employment	22
	7 Age	23
	8 Industry, August 2000 and August 2001	24
	9 Occupation, August 2000 and August 2001	26
Graph	Employed persons:	
	Annual change in Employment by Age, August 2000–August 2001	23
Tables	Unemployed persons:	
	10 Age	27
	11 Unemployment rate by age	28
	12 Industry and occupation of last job, August 2001	29
	13 Duration of unemployment	29
	14 Unemployment rate by birthplace and period of arrival	30
	15 Duration of unemployment by age	31
Graphs	Unemployment rate:	
	Unemployment rate by age, August 1999–August 2001	28
	Unemployment rate by period of arrival of overseas born, August 2001	30

Tables	Regional data:	
	Labour force status	
	16 Sydney Major Statistical Region	32
	17 Balance of NSW Major Statistical Region	33
	Employed persons:	
	18 Industry and occupation, Sydney Major Statistical Region and Balance of NSW Major Statistical Region, August 2001	34
	19 Labour force status of regions of NSW and ACT	35
AUSTRALIAN CAPITAL TERRITORY		
Tables	Labour force status:	
	20 Original series	43
	21 Trend series	44
	22 Age, August 2001	47
	23 Non-institutionalised persons, birthplace and year of arrival, August 2001	47
Graphs	Labour force status:	
	Trend series, August 1991–August 2001	
	Employed males	46
	Employed females	46
	Unemployed males	46
	Unemployed females	46
	Male unemployment rate	46
	Female unemployment rate	46
	Male participation rate	46
	Female participation rate	46
Tables	Employed persons:	
	24 Industry, average for year ending August 2000 and August 2001	48
	25 Occupation, average for year ending August 2000 and August 2001	48
	Unemployed persons:	
	26 Long-term unemployment	49

1

LABOUR FORCE STATUS, ORIGINAL SERIES, NSW

Month	Employed			Unemployed		
	Full-time workers	Part-time workers	Total	Looking for full-time work	Looking for part-time work	Total
	'000	'000	'000	'000	'000	'000
MALES						
August						
1997	1 391.0	179.1	1 570.1	116.4	12.9	129.3
1998	1 424.7	176.1	1 600.8	114.4	17.8	132.2
1999	1 464.9	199.7	1 664.6	94.4	18.1	112.6
2000						
June	1 518.4	201.7	1 720.1	84.6	13.9	98.4
July	1 529.6	207.0	1 736.5	78.9	15.2	94.2
August	1 492.9	211.7	1 704.6	86.1	11.5	97.5
2001						
May	1 478.0	235.1	1 713.1	89.0	18.8	107.8
June	1 479.3	233.7	1 713.0	91.6	18.4	110.0
July	1 484.9	247.5	1 732.4	87.4	16.4	103.8
August	1 466.3	244.5	1 710.7	88.8	14.2	103.0
MARRIED FEMALES						
August						
1997	398.7	313.2	712.0	24.8	10.4	35.2
1998	407.9	323.2	731.1	23.5	9.4	32.9
1999	406.9	326.1	733.0	22.1	9.8	31.9
2000						
June	454.2	349.8	804.1	13.9	12.6	26.5
July	473.1	348.8	821.9	13.9	6.4	20.3
August	452.8	354.3	807.1	14.3	9.3	23.6
2001						
May	451.5	364.6	816.1	19.6	8.8	28.3
June	460.1	364.0	824.1	19.6	9.3	29.0
July	459.6	373.5	833.1	16.9	8.3	25.2
August	441.9	377.3	819.2	20.8	9.8	30.6
ALL FEMALES						
August						
1997	705.5	481.2	1 186.7	63.8	25.3	89.1
1998	725.4	497.9	1 223.3	61.4	20.5	81.9
1999	723.8	515.3	1 239.1	53.8	30.2	84.0
2000						
June	783.4	545.7	1 329.0	39.4	33.0	72.4
July	812.3	534.3	1 346.6	36.0	21.9	57.8
August	787.5	546.9	1 334.4	39.7	27.6	67.3
2001						
May	781.5	563.2	1 344.7	50.2	28.9	79.1
June	792.0	561.6	1 353.6	50.3	28.4	78.7
July	790.7	560.2	1 350.9	47.3	23.3	70.6
August	766.4	573.9	1 340.3	59.5	28.8	88.3
PERSONS						
August						
1997	2 096.5	660.3	2 756.8	180.2	38.2	218.4
1998	2 150.1	674.0	2 824.1	175.8	38.2	214.1
1999	2 188.7	715.0	2 903.7	148.3	48.3	196.6
2000						
June	2 301.7	747.4	3 049.1	124.0	46.8	170.8
July	2 341.9	741.2	3 083.1	114.9	37.1	152.0
August	2 280.4	758.6	3 039.0	125.8	39.0	164.9
2001						
May	2 259.4	798.3	3 057.7	139.2	47.7	186.9
June	2 271.3	795.4	3 066.7	142.0	46.8	188.8
July	2 275.6	807.8	3 083.3	134.7	39.7	174.4
August	2 232.6	818.4	3 051.0	148.3	43.0	191.3

...continued

1

LABOUR FORCE STATUS, ORIGINAL SERIES, NSW *continued*

<i>Month</i>	<i>Labour force</i> '000	<i>Not in labour force</i> '000	<i>Civilian population</i> <i>aged 15 and over</i> '000	<i>Unemployment rate</i> %	<i>Participation rate</i> %
MALES					
August					
1997	1 699.4	728.5	2 428.0	7.6	70.0
1998	1 733.0	729.4	2 462.4	7.6	70.4
1999	1 777.1	722.3	2 499.4	6.3	71.1
2000					
June	1 818.5	716.2	2 534.7	5.4	71.7
July	1 830.7	706.9	2 537.6	5.1	72.1
August	1 802.2	738.4	2 540.5	5.4	70.9
2001					
May	1 820.9	739.3	2 560.1	5.9	71.1
June	1 823.1	739.6	2 562.7	6.0	71.1
July	1 836.2	729.4	2 565.6	5.7	71.6
August	1 813.7	754.7	2 568.4	5.7	70.6
MARRIED FEMALES					
August					
1997	747.1	673.4	1 420.5	4.7	52.6
1998	764.0	673.0	1 437.0	4.3	53.2
1999	764.9	700.5	1 465.4	4.2	52.2
2000					
June	830.6	648.7	1 479.3	3.2	56.1
July	842.2	646.4	1 488.6	2.4	56.6
August	830.7	661.6	1 492.3	2.8	55.7
2001					
May	844.4	660.9	1 505.4	3.4	56.1
June	853.1	653.9	1 507.0	3.4	56.6
July	858.3	648.1	1 506.5	2.9	57.0
August	849.8	659.9	1 509.7	3.6	56.3
ALL FEMALES					
August					
1997	1 275.8	1 243.5	2 519.3	7.0	50.6
1998	1 305.2	1 245.9	2 551.1	6.3	51.2
1999	1 323.1	1 261.8	2 584.9	6.3	51.2
2000					
June	1 401.4	1 212.6	2 614.0	5.2	53.6
July	1 404.4	1 212.2	2 616.7	4.1	53.7
August	1 401.7	1 217.6	2 619.3	4.8	53.5
2001					
May	1 423.8	1 210.4	2 634.2	5.6	54.1
June	1 432.4	1 203.8	2 636.2	5.5	54.3
July	1 421.6	1 217.2	2 638.7	5.0	53.9
August	1 428.6	1 212.7	2 641.3	6.2	54.1
PERSONS					
August					
1997	2 975.2	1 972.1	4 947.2	7.3	60.1
1998	3 038.2	1 975.3	5 013.5	7.0	60.6
1999	3 100.3	1 984.1	5 084.4	6.3	61.0
2000					
June	3 219.9	1 928.7	5 148.6	5.3	62.5
July	3 235.1	1 919.1	5 154.3	4.7	62.8
August	3 203.9	1 956.0	5 159.9	5.1	62.1
2001					
May	3 244.7	1 949.7	5 194.4	5.8	62.5
June	3 255.4	1 943.4	5 198.9	5.8	62.6
July	3 257.7	1 946.6	5 204.3	5.4	62.6
August	3 242.3	1 967.4	5 209.7	5.9	62.2

2

LABOUR FORCE STATUS, SEASONALLY ADJUSTED AND TREND SERIES, NSW

	<i>Seasonally adjusted series</i>				
	<i>Employed</i>	<i>Unemployed</i>	<i>Labour force</i>	<i>Unemployment rate</i>	<i>Participation rate</i>
	'000	'000	'000	%	%
MALES					
August					
1997	1 584.4	129.5	1 713.9	7.6	70.6
1998	1 617.0	131.8	1 748.8	7.5	71.0
1999	1 682.5	112.2	1 794.8	6.3	71.8
2000					
March	1 721.1	103.0	1 824.1	5.6	72.0
April	1 724.9	102.5	1 827.4	5.6	72.0
May	1 723.7	97.2	1 820.9	5.3	71.7
June	1 727.2	99.4	1 826.6	5.4	71.8
July	1 721.0	101.2	1 822.2	5.6	71.6
August	1 710.1	103.8	1 813.9	5.7	71.2
September	1 709.4	109.5	1 818.9	6.0	71.3
2001					
January	1 697.7	110.0	1 807.7	6.1	70.9
February	1 692.5	114.7	1 807.2	6.3	70.8
March	1 701.9	103.4	1 805.3	5.7	70.7
April	1 711.3	108.7	1 820.0	6.0	71.2
May	1 716.6	111.5	1 828.1	6.1	71.4
June	1 713.9	115.1	1 829.0	6.3	71.4
July	1 720.2	113.0	1 833.2	6.2	71.5
August	1 730.3	102.6	1 832.9	5.6	71.4
FEMALES					
August					
1997	1 204.9	94.9	1 299.8	7.3	51.6
1998	1 243.4	86.8	1 330.2	6.5	52.1
1999	1 260.4	89.0	1 349.4	6.6	52.2
2000					
June	1 321.9	78.7	1 400.6	5.6	53.6
July	1 334.9	64.6	1 399.5	4.6	53.5
August	1 358.4	71.2	1 429.6	5.0	54.6
September	1 333.5	70.2	1 403.7	5.0	53.5
October	1 325.2	67.6	1 392.8	4.9	53.1
November	1 318.2	72.7	1 390.9	5.2	53.0
December	1 324.0	74.7	1 398.7	5.3	53.3
2001					
January	1 337.6	69.5	1 407.2	4.9	53.6
February	1 339.6	76.1	1 415.6	5.4	53.8
March	1 333.8	71.5	1 405.3	5.1	53.4
April	1 358.8	78.6	1 437.4	5.5	54.6
May	1 348.1	77.9	1 426.0	5.5	54.1
June	1 346.5	85.5	1 432.0	6.0	54.3
July	1 338.8	79.0	1 417.8	5.6	53.7
August	1 364.9	93.3	1 458.2	6.4	55.2

...continued

2

LABOUR FORCE STATUS, SEASONALLY ADJUSTED AND TREND SERIES, NSW *continued*

	<i>Seasonally adjusted series</i>				
	<i>Employed</i>	<i>Unemployed</i>	<i>Labour force</i>	<i>Unemployment rate</i>	<i>Participation rate</i>
	'000	'000	'000	%	%
PERSONS					
May					
1997	2 789.3	224.4	3 013.7	7.4	60.9
1998	2 860.4	218.6	3 079.0	7.1	61.4
1999	2 942.9	201.3	3 144.2	6.4	61.8
2000					
June	3 043.0	181.7	3 224.7	5.6	62.6
July	3 059.8	167.1	3 226.9	5.2	62.6
August	3 082.1	168.4	3 250.5	5.2	63.0
September	3 060.6	169.6	3 230.3	5.3	62.5
October	3 046.2	168.8	3 215.0	5.3	62.2
November	3 028.3	176.5	3 204.8	5.5	62.0
December	3 033.4	184.2	3 217.6	5.7	62.2
2001					
January	3 035.3	179.5	3 214.9	5.6	62.1
February	3 032.1	190.8	3 222.9	5.9	62.2
March	3 035.7	174.9	3 210.6	5.4	61.9
April	3 070.1	187.3	3 257.4	5.7	62.8
May	3 064.7	189.4	3 254.0	5.8	62.6
June	3 060.4	200.6	3 261.0	6.2	62.7
July	3 059.1	191.9	3 251.0	5.9	62.5
August	3 095.2	195.9	3 291.1	6.0	63.2

	<i>Trend series(a)</i>				
	<i>Employed</i>	<i>Unemployed</i>	<i>Labour force</i>	<i>Unemployment rate</i>	<i>Participation rate</i>
	'000	'000	'000	%	%
MALES					
May					
1997	1 598.0	137.7	1 735.8	7.9	71.5
1998	1 633.0	129.7	1 762.7	7.4	71.6
1999	1 682.3	109.6	1 791.9	6.1	71.7
2000					
June	1 723.5	100.7	1 824.2	5.5	72.0
July	1 725.3	100.1	1 825.5	5.5	71.9
August	1 725.2	99.9	1 825.1	5.5	71.8
September	1 722.9	100.6	1 823.5	5.5	71.7
October	1 718.1	102.5	1 820.6	5.6	71.5
November	1 712.0	104.8	1 816.8	5.8	71.3
December	1 706.0	107.0	1 813.0	5.9	71.1
2001					
January	1 701.8	108.7	1 810.5	6.0	71.0
February	1 700.5	109.7	1 810.3	6.1	70.9
March	1 702.6	110.3	1 812.9	6.1	70.9
April	1 707.1	110.5	1 817.7	6.1	71.1
May	1 712.4	110.6	1 823.0	6.1	71.2
June	1 717.5	110.5	1 828.0	6.0	71.3
July	1 722.1	110.1	1 832.1	6.0	71.4
August	1 726.0	109.3	1 835.3	6.0	71.5
FEMALES					
May					
1997	1 204.8	93.6	1 298.5	7.2	51.5
1998	1249.4	91.1	1340.5	6.8	52.5
1999	1265.1	84.0	1349.1	6.2	52.2
2000					
June	1334.0	74.2	1408.2	5.3	53.9
July	1336.7	72.2	1408.9	5.1	53.8
August	1336.4	70.5	1406.9	5.0	53.7
September	1334.1	69.8	1403.8	5.0	53.6
October	1330.6	69.9	1400.5	5.0	53.4
November	1328.0	70.7	1398.8	5.1	53.3
December	1328.0	71.7	1399.8	5.1	53.3
2001					
January	1331.5	72.7	1404.2	5.2	53.4
February	1337.0	73.6	1410.6	5.2	53.7
March	1342.2	75.0	1417.2	5.3	53.9
April	1345.5	76.9	1422.5	5.4	54.0
May	1347.6	79.4	1427.0	5.6	54.2
June	1349.5	82.2	1431.6	5.7	54.3
July	1351.3	84.9	1436.2	5.9	54.4
August	1353.2	87.2	1440.4	6.1	54.6

For footnotes see end of table.

...continued

2

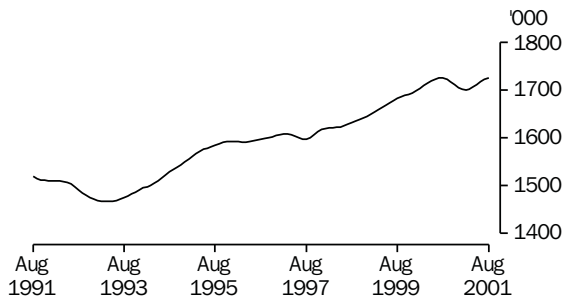
LABOUR FORCE STATUS, SEASONALLY ADJUSTED AND TREND SERIES, NSW *continued*

	<i>Trend series(a)</i>				
	<i>Employed</i>	<i>Unemployed</i>	<i>Labour force</i>	<i>Unemployment rate</i>	<i>Participation rate</i>
	'000	'000	'000	%	%
PERSONS					
May					
1997	2 802.9	231.4	3 034.2	7.6	61.3
1998	2 882.4	220.8	3 103.2	7.1	61.9
1999	2 947.4	193.5	3 141.0	6.2	61.8
2000					
June	3 057.5	174.9	3 232.4	5.4	62.8
July	3 062.1	172.4	3 234.4	5.3	62.8
August	3 061.6	170.4	3 232.0	5.3	62.6
September	3 056.9	170.4	3 227.3	5.3	62.5
October	3 048.8	172.4	3 221.2	5.4	62.3
November	3 040.0	175.6	3 215.6	5.5	62.2
December	3 034.0	178.7	3 212.8	5.6	62.1
2001					
January	3 033.3	181.3	3 214.6	5.6	62.1
February	3 037.5	183.3	3 220.8	5.7	62.2
March	3 044.8	185.3	3 230.1	5.7	62.3
April	3 052.7	187.4	3 240.1	5.8	62.4
May	3 060.0	190.0	3 250.0	5.8	62.6
June	3 066.9	192.6	3 259.6	5.9	62.7
July	3 073.3	195.0	3 268.3	6.0	62.8
August	3 079.2	196.5	3 275.7	6.0	62.9

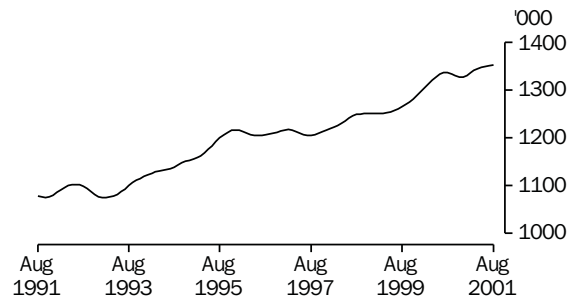
(a) See Explanatory Notes paragraph 29 and 30.

TREND SERIES, NSW(a)

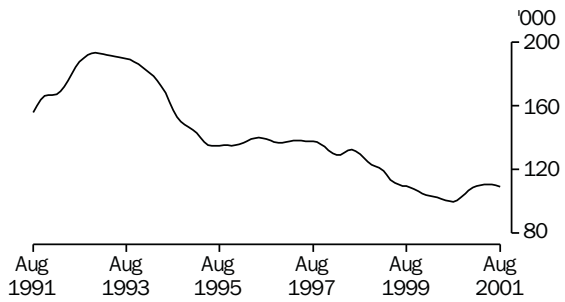
EMPLOYED MALES



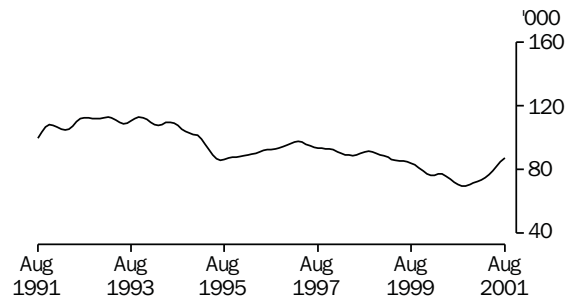
EMPLOYED FEMALES



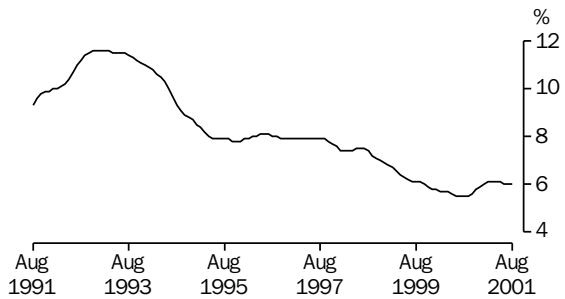
UNEMPLOYED MALES



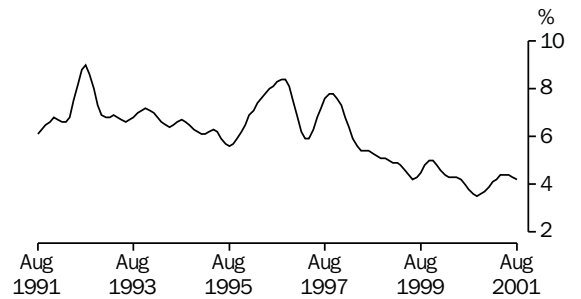
UNEMPLOYED FEMALES



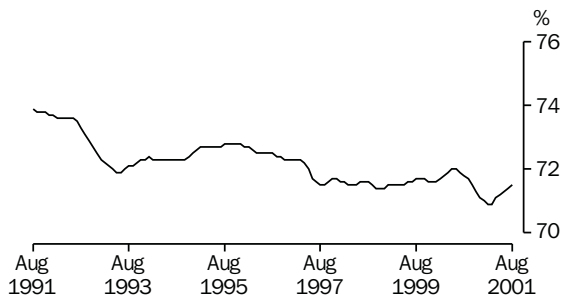
MALE UNEMPLOYMENT RATE



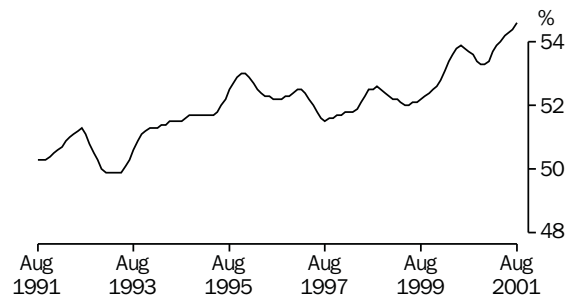
FEMALE UNEMPLOYMENT RATE



MALE PARTICIPATION RATE



FEMALE PARTICIPATION RATE



(a) Comparisons between these graphs should not be made, as their vertical axes are not similarly scaled.

3

LABOUR FORCE STATUS, AGE, NSW—AUGUST 2001

Age group (years)	Employed			Unemployed			Labour force	Not in labour force	Civilian population aged 15 and over	Unem- ployment rate	Parti- cipation rate
	Full-time workers	Part-time workers	Total	Looking for full-time work	Looking for part-time work	Total					
	'000	'000	'000	'000	'000	'000	'000	'000	'000	%	%
MALES											
15-19	44.7	58.1	102.8	10.5	*5.9	16.4	119.2	109.8	229.0	13.7	52.1
20-24	132.8	42.7	175.5	15.3	*2.7	18.0	193.6	36.3	229.8	9.3	84.2
25-34	386.6	35.2	421.8	22.2	*1.2	23.5	445.3	41.6	486.8	5.3	91.5
35-44	399.3	32.9	432.2	19.8	*1.0	20.9	453.1	44.2	497.2	4.6	91.1
45-54	335.4	33.9	369.3	14.4	*1.4	15.7	385.0	59.5	444.5	4.1	86.6
55-59	102.4	15.8	118.2	*4.9	*0.7	*5.5	123.7	49.9	173.7	*4.5	71.3
60-64	45.5	11.7	57.2	*1.3	*0.7	*2.0	59.2	79.3	138.5	*3.4	42.7
65 and over	19.5	14.2	33.7	*0.3	*0.6	*1.0	34.7	334.2	368.9	*2.8	9.4
Total	1 466.3	244.5	1 710.7	88.8	14.2	103.0	1 813.7	754.7	2 568.4	5.7	70.6
MARRIED FEMALES											
15-19	*2.8	*1.1	*3.9	*0.0	*0.7	*0.7	*4.6	*2.9	7.5	15.4	61.6
20-24	23.8	11.6	35.4	*3.0	*1.2	*4.2	39.6	19.9	59.5	10.5	66.5
25-34	126.7	77.3	204.1	7.0	*2.5	9.5	213.6	98.1	311.7	4.5	68.5
35-44	123.3	128.5	251.8	6.7	*3.7	10.4	262.2	105.2	367.4	4.0	71.4
45-54	127.9	108.8	236.7	*3.1	*1.7	*4.8	241.5	97.3	338.8	*2.0	71.3
55-59	28.0	32.5	60.5	*1.0	*0.0	*1.0	61.5	66.4	127.9	*1.6	48.1
60-64	6.7	10.1	16.8	*0.0	*0.0	*0.0	16.8	79.6	96.4	*0.0	17.5
65 and over	*2.6	7.4	10.0	*0.0	*0.0	*0.0	10.0	190.5	200.5	*0.0	5.0
Total	441.9	377.3	819.2	20.8	9.8	30.6	849.8	659.9	1 509.7	3.6	56.3
ALL FEMALES											
15-19	26.3	73.9	100.2	9.7	10.8	20.5	120.8	97.9	218.6	17.0	55.2
20-24	104.4	51.0	155.4	11.6	*4.2	15.8	171.2	52.1	223.4	9.3	76.7
25-34	230.0	105.1	335.1	16.1	*3.2	19.3	354.4	137.2	491.6	5.4	72.1
35-44	181.4	153.6	335.1	11.8	6.8	18.6	353.7	140.4	494.1	5.3	71.6
45-54	171.0	125.1	296.0	8.6	*3.1	11.7	307.7	129.1	436.8	*3.8	70.5
55-59	39.7	40.0	79.7	*1.6	*0.3	*2.0	81.7	86.2	167.9	*2.4	48.7
60-64	10.2	15.0	25.2	*0.0	*0.3	*0.3	25.6	111.8	137.4	*1.3	18.6
65 and over	3.2	10.3	13.6	*0.0	*0.0	*0.0	13.6	458.0	471.5	*0.0	2.9
Total	766.4	573.9	1 340.3	59.5	28.8	88.3	1 428.6	1 212.7	2 641.3	6.2	54.1
PERSONS											
15-19	71.0	132.1	203.1	20.3	16.6	36.9	240.0	207.7	447.7	15.4	53.6
20-24	237.2	93.7	330.9	27.0	6.9	33.9	364.8	88.4	453.2	9.3	80.5
25-34	616.6	140.2	756.9	38.3	*4.5	42.8	799.6	178.8	978.4	5.3	81.7
35-44	580.8	186.5	767.3	31.6	7.9	39.5	806.7	184.6	991.4	4.9	81.4
45-54	506.4	158.9	665.3	23.0	*4.5	27.4	692.8	188.5	881.3	4.0	78.6
55-59	142.1	55.8	197.9	6.5	*1.0	7.5	205.4	136.1	341.6	3.7	60.1
60-64	55.7	26.7	82.4	*1.3	*1.0	*2.4	84.8	191.1	275.8	*2.8	30.7
65 and over	22.7	24.5	47.3	*0.3	*0.6	*1.0	48.2	792.1	840.4	*2.0	5.7
Total	2 232.6	818.4	3 051.0	148.3	43.0	191.3	3 242.3	1 967.4	5 209.7	5.9	62.2

Age (years)	Employed			Unemployed			Labour force	Not in labour force	Civilian population aged 15 and over	Unemployment rate	Participation rate
	Full-time workers	Part-time workers	Total	Looking for full-time work	Looking for part-time work	Total					
	'000	'000	'000	'000	'000	'000	'000	'000	'000	%	%
ATTENDING SCHOOL OR A TERTIARY EDUCATIONAL INSTITUTION FULL-TIME											
15-19											
15	*0.0	20.3	20.3	*0.3	*3.7	*4.0	24.3	61.0	85.3	*16.5	28.4
16	*0.0	24.3	24.3	*0.0	*5.1	*5.1	29.4	48.6	78.0	*17.4	37.7
17	*0.4	26.0	26.3	*0.5	*0.9	*1.4	27.8	41.4	69.1	*5.2	40.1
18	*0.4	21.0	21.4	*0.0	*2.8	*2.8	24.2	21.8	46.0	*11.7	52.6
19	*1.4	17.1	18.5	*0.7	*1.1	*1.8	20.3	14.5	34.7	*8.8	58.4
Total	*2.2	108.5	110.7	*1.5	13.7	15.2	125.9	187.3	313.2	12.1	40.2
20-24											
20	*0.0	17.4	17.4	*0.0	*1.1	*1.1	18.5	12.1	30.6	*5.9	60.4
21	*0.4	14.3	14.7	*0.0	*1.0	*1.0	15.7	10.8	26.5	*6.6	59.4
22	*1.1	9.4	10.5	*0.3	*1.0	*1.3	11.8	9.0	20.8	*11.3	56.6
23	*0.4	*4.3	*4.7	*0.4	*1.2	*1.6	6.2	*3.3	9.5	*25.1	65.5
24	*0.4	*4.1	*4.4	*0.8	*0.4	*1.2	*5.6	*4.6	10.2	*21.1	55.0
Total	*2.2	49.5	51.7	*1.5	*4.7	6.2	57.9	39.8	97.7	10.7	59.3
Total aged 15-24	*4.4	158.0	162.4	*3.0	18.4	21.4	183.8	227.1	410.9	11.6	44.7
NOT ATTENDING SCHOOL OR A TERTIARY EDUCATIONAL INSTITUTION FULL-TIME											
15-19											
15	*0.8	*0.4	*1.1	*0.3	*0.8	*1.1	*2.2	*0.7	*2.9	*48.2	77.0
16	*4.5	*1.8	6.3	*2.5	*0.0	*2.5	8.8	*1.8	10.6	*28.0	83.2
17	8.3	*4.3	12.6	*3.8	*0.0	*3.8	16.4	*3.8	20.1	*23.1	81.3
18	21.5	10.2	31.8	7.3	*0.8	8.1	39.8	*4.8	44.7	20.3	89.2
19	33.7	6.9	40.5	*5.0	*1.4	6.4	46.9	9.4	56.3	13.5	83.3
Total	68.8	23.5	92.3	18.8	*3.0	21.7	114.1	20.4	134.5	19.1	84.8
20-24											
20	34.2	10.5	44.7	*4.2	*0.7	*4.9	49.6	11.0	60.6	*9.9	81.9
21	46.2	7.6	53.8	*4.2	*0.0	*4.2	57.9	*5.8	63.7	*7.2	90.9
22	46.6	8.8	55.4	*4.7	*0.7	*5.4	60.8	8.8	69.6	*8.9	87.4
23	52.8	9.1	61.9	7.0	*0.4	7.4	69.3	11.4	80.7	10.7	85.8
24	55.3	8.2	63.5	*5.4	*0.4	*5.8	69.3	11.6	80.8	*8.3	85.7
Total	235.0	44.2	279.2	25.5	*2.2	27.7	306.9	48.6	355.5	9.0	86.3
Total aged 15-24	303.8	67.8	371.6	44.3	*5.2	49.4	421.0	69.0	490.0	11.7	85.9
TOTAL											
15-19											
15	*0.8	20.6	21.4	*0.6	*4.5	*5.1	26.5	61.7	88.1	*19.1	30.0
16	*4.5	26.1	30.6	*2.5	*5.1	7.6	38.2	50.4	88.6	19.8	43.1
17	8.7	30.2	38.9	*4.3	*0.9	*5.2	44.1	45.1	89.3	*11.8	49.4
18	21.9	31.2	53.1	7.3	*3.6	10.9	64.0	26.7	90.7	17.1	70.6
19	35.1	23.9	59.0	*5.7	*2.5	8.1	67.1	23.8	91.0	12.1	73.8
Total	71.0	132.1	203.1	20.3	16.6	36.9	240.0	207.7	447.7	15.4	53.6
20-24											
20	34.2	27.9	62.1	*4.2	*1.8	*6	68.1	23.1	91.2	*8.8	74.7
21	46.5	21.9	68.5	*4.2	*1.0	*5.2	73.7	16.6	90.3	*7.1	81.6
22	47.7	18.2	65.9	*5.1	*1.7	6.8	72.6	17.8	90.5	9.3	80.3
23	53.1	13.4	66.5	7.4	*1.5	8.9	75.5	14.7	90.2	11.9	83.7
24	55.7	12.3	67.9	6.1	*0.8	6.9	74.9	16.2	91.1	9.3	82.2
Total	237.2	93.7	330.9	27.0	6.9	33.9	364.8	88.4	453.2	9.3	80.5
Total aged 15-24	308.2	225.8	534.0	47.2	23.6	70.8	604.8	296.1	900.9	11.7	67.1

5

LABOUR FORCE STATUS, FAMILY STATUS, NSW—AUGUST 2001

<i>Family status</i>	<i>Employed</i>			<i>Unemployed</i>			<i>Labour force</i>	<i>Not in labour force</i>	<i>Civilian population aged 15 and over</i>	<i>Unemployment rate</i>	<i>Participation rate</i>
	<i>Full-time workers</i>	<i>Part-time workers</i>	<i>Total</i>	<i>Looking for full-time work</i>	<i>Looking for part-time work</i>	<i>Total</i>					
	'000	'000	'000	'000	'000	'000	'000	'000	'000	%	%
Family member	1 799.0	708.9	2 508.0	117.0	36.6	153.6	2 661.6	1 450.1	4 111.7	5.8	64.7
Husband or partner											
With children under 15	495.8	36.6	532.5	23.9	*0.4	24.2	556.7	41.8	598.5	4.3	93.0
Without children under 15	485.7	58.9	544.6	13.8	*4.3	18.1	562.7	345.6	908.3	3.2	62.0
With dependants	584.3	42.9	627.2	25.6	*0.7	26.3	653.5	54.9	708.4	4.0	92.3
Without dependants	397.2	52.6	449.8	12.1	*4.0	16.0	465.9	332.5	798.3	3.4	58.4
Wife or partner											
With children under 15	136.1	201.3	337.3	9.2	8.0	17.2	354.5	209.5	564.0	4.9	62.9
Without children under 15	287.7	164.4	452.1	10.1	*1.8	11.8	463.9	421.8	885.6	2.5	52.4
With dependants	183.8	234.9	418.7	10.6	8.7	19.3	438.0	233.9	671.8	4.4	65.2
Without dependants	240.0	130.7	370.7	8.7	*1.1	9.7	380.4	397.4	777.8	2.5	48.9
Male lone parent											
With children under 15	6.1	3.6	9.6	*0.7	*0.4	*1.1	10.7	*4.1	14.8	10.3	72.3
With dependent students but without children under 15	*5.9	*0.4	6.3	*1.1	*0.3	*1.4	7.7	*1.8	9.4	18.2	81.9
With no dependants but with children aged 15 and over	6.3	*1.4	7.7	*0.3	*0.0	*0.3	8.0	*4.5	12.5	3.8	64.0
Female lone parent											
With children under 15	25.4	31.2	56.7	10.0	*2.8	12.8	69.5	66.1	135.7	18.4	51.2
With dependent students but without children under 15	7.5	7.3	14.8	*0.7	*0.0	*0.7	15.5	6.6	22.1	*4.5	70.1
With no dependants but with children aged 15 and over	13.5	6.4	19.8	*1.4	*0.0	*1.4	21.2	42.3	63.5	*6.6	33.4
Dependent student	*3.3	129.7	133.0	*1.5	15.1	16.6	149.6	179.3	328.8	11.1	45.5
Non-dependent child	286.0	57.2	343.2	38.4	*2.5	41.0	384.2	66.4	450.6	10.7	85.3
Other related individual	79.4	21.3	100.8	11.9	*2.2	14.1	114.9	121.0	235.8	12.3	48.7
Not a member of a family											
Living alone	156.9	38.8	195.8	11.8	*2.6	14.4	210.2	57.0	267.2	6.9	78.7
Not living alone	192.1	41.8	233.9	12.1	*2.5	14.6	248.4	295.2	543.6	5.9	45.7
Usual resident of a household where relationship was determined	2 148.0	789.6	2 937.6	141.0	41.6	182.6	3 120.2	1 802.2	4 922.4	5.9	63.4

6

EMPLOYED PERSONS(a), STATUS IN EMPLOYMENT, NSW

Status in employment	Males			Females			Persons		
	August 2000	May 2001	August 2001	August 2000	May 2001	August 2001	August 2000	May 2001	August 2001
Employees	1 423.7	1 436.2	1 428.0	1 198.8	1 227.3	1 215.5	2 622.6	2 663.5	2 643.5
Employers	77.2	74.4	71.4	32.7	34.2	31.5	110.0	108.6	102.9
Own account workers	192.0	195.3	207.0	82.6	79.0	88.2	274.6	274.3	295.2
Total employed(b)	1 701.7	1 713.1	1 710.7	1 329.4	1 344.7	1 340.3	3 031.1	3 057.7	3 051.0

(a) A change in the definition of employed persons has caused an estimated increase of 5,900 employed people in NSW from March 2001 to April 2001.

(b) Includes contributing family workers.

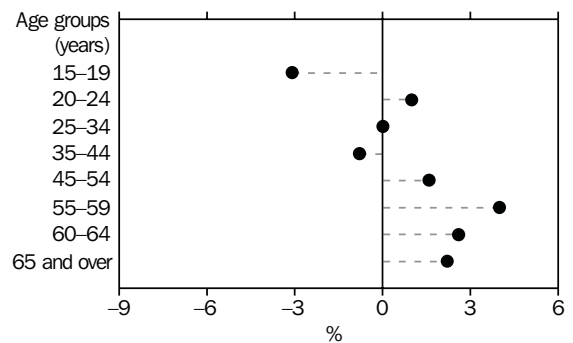
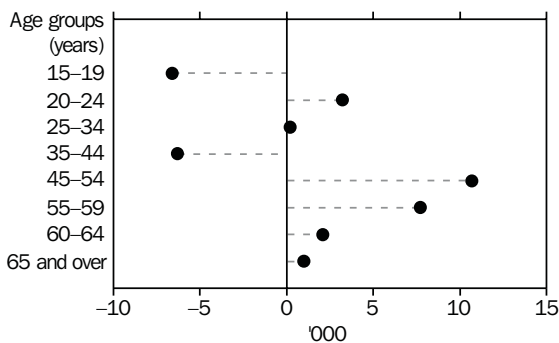
7

EMPLOYED PERSONS(a), AGE, NSW

Month	Age group (years)								Total employed '000
	15-19 '000	20-24 '000	25-34 '000	35-44 '000	45-54 '000	55-59 '000	60-64 '000	65 and over '000	
MALES									
2000									
August	99.8	172.0	425.9	436.8	364.0	117.0	55.5	33.6	1 704.6
2001									
May	104.8	174.9	424.0	434.8	365.9	117.0	56.0	35.6	1 713.1
June	104.3	177.2	420.8	438.3	366.2	117.2	54.9	34.2	1 713.0
July	107.3	185.9	423.3	437.2	367.8	115.6	57.6	37.7	1 732.4
August	102.8	175.5	421.8	432.2	369.3	118.2	57.2	33.7	1 710.7
MARRIED FEMALES									
2000									
August	*2.1	36.3	208.4	258.9	222.5	54.6	15.9	8.5	807.1
2001									
May	*3.8	38.1	211.9	255.0	222.0	58.4	17.1	9.8	816.1
June	*3.9	37.6	212.1	256.0	224.6	59.7	18.6	11.6	824.1
July	*3.4	39.1	214.9	257.6	226.2	60.7	18.3	12.9	833.1
August	*3.9	35.4	204.1	251.8	236.7	60.5	16.8	10.0	819.2
ALL FEMALES									
2000									
August	110.0	155.6	330.7	336.8	290.6	73.2	24.8	12.7	1 334.4
2001									
May	106.4	165.5	342.5	333.8	282.2	76.8	23.0	14.4	1 344.7
June	103.5	166.7	341.0	337.4	286.3	78.6	25.2	14.9	1 353.6
July	100.4	161.1	342.1	338.8	286.3	78.4	27.0	16.8	1 350.9
August	100.2	155.4	335.1	335.1	296.0	79.7	25.2	13.6	1 340.3
PERSONS									
2000									
August	209.7	327.7	756.7	773.6	654.6	190.2	80.3	46.3	3 039.0
2001									
May	211.3	340.4	766.5	768.7	648.1	193.8	79.0	50.0	3 057.7
June	207.8	343.9	761.7	775.6	652.5	195.8	80.1	49.1	3 066.7
July	207.7	347.0	765.5	776.0	654.2	193.9	84.6	54.5	3 083.3
August	203.1	330.9	756.9	767.3	665.3	197.9	82.4	47.3	3 051.0

(a) A change in the definition of employed persons has caused an estimated increase of 5,900 employed people in NSW from March 2001 to April 2001.

ANNUAL CHANGE IN EMPLOYMENT BY AGE, NSW, AUGUST 2000 TO AUGUST 2001



<i>Industry division and subdivision</i>	<i>Males</i>		<i>Females</i>		<i>Persons</i>	
	<i>August 2000</i>	<i>August 2001</i>	<i>August 2000</i>	<i>August 2001</i>	<i>August 2000</i>	<i>August 2001</i>
<i>Agriculture, forestry and fishing</i>						
Agriculture	70.0	82.3	33.5	32.1	103.6	114.4
Services to agriculture; hunting and trapping	8.9	*5.3	*3.7	*3.0	12.6	8.3
Forestry and logging	*5.5	*1.6	*0.3	*1.0	*5.8	*2.6
Commercial fishing	*3.4	*3.3	*0.3	*0.7	*3.7	*4.0
<i>Total</i>	87.8	92.5	37.9	36.8	125.7	129.3
<i>Mining</i>						
Coal mining	6.5	14.0	0.3	0.4	6.8	14.4
Oil and gas extraction	*0.0	*0.0	*0.0	*0.0	*0.0	*0.0
Metal ore mining	*1.8	*1.6	*0.0	*0.0	*1.8	*1.6
Other mining	*2.4	*3.1	*0.7	*0.0	*3.1	*3.1
Services to mining	*1.1	*0.4	*0.0	*0.3	*1.1	*0.7
<i>Total</i>	11.8	19.1	*1	*0.7	12.8	19.8
<i>Manufacturing</i>						
Food, beverage and tobacco manufacturing	26.8	35.0	17.6	20.4	44.4	55.3
Textile, clothing, leather and footwear manufacturing	11.0	9.8	17.5	12.7	28.5	22.4
Wood and paper product manufacturing	21.6	18.5	*3.9	*5	25.5	23.6
Printing, publishing and recorded media	28.4	24.2	21.1	22.3	49.6	46.5
Petroleum, coal, chemical and associated product manufacturing	21.1	20.5	17.8	7.5	38.9	27.9
Non-metallic mineral product manufacturing	10.9	14.5	*1.4	*2.0	12.3	16.5
Metal product manufacturing	62.7	51.7	9.5	6.4	72.2	58.1
Machinery and equipment manufacturing	54.3	59.7	17.0	14.3	71.3	74.0
Other manufacturing	17.9	12.0	*4.4	*4.5	22.2	16.5
<i>Total</i>	254.7	245.9	110.2	95.0	364.9	340.9
<i>Electricity, gas and water supply</i>						
Electricity and gas supply	12.0	12.0	*1.7	*2.5	13.8	14.5
Water supply, sewerage and drainage services	7.0	6.4	*1.4	*1.7	8.4	8.2
<i>Total</i>	19.0	18.4	*3.1	*4.3	22.1	22.7
<i>Construction</i>						
General construction	76.9	76.1	8.7	11.3	85.6	87.4
Construction trade services	150.1	120.0	18.9	18.3	169.0	138.4
<i>Total</i>	227.0	196.1	27.6	29.7	254.6	225.8
<i>Wholesale trade</i>						
Basic material wholesaling	29.9	23.4	10.7	7.7	40.7	31.1
Machinery and motor vehicle wholesaling	49.0	46.3	17.1	14.8	66.2	61.1
Personal and household good wholesaling	39.1	37.2	25.3	20.9	64.4	58.1
<i>Total</i>	118.1	106.9	53.2	43.4	171.2	150.3
<i>Retail trade</i>						
Food retailing	65.8	76.8	87.7	100.8	153.5	177.6
Personal and household good retailing	71.6	74.3	117.5	111.2	189.1	185.5
Motor vehicle retailing and services	62.7	63.8	19.8	20.6	82.5	84.4
<i>Total</i>	200.2	214.9	225.1	232.6	425.2	447.5

For footnotes see end of table.

...continued

<i>Industry division and subdivision</i>	<i>Males</i>		<i>Females</i>		<i>Persons</i>	
	<i>August 2000</i>	<i>August 2001</i>	<i>August 2000</i>	<i>August 2001</i>	<i>August 2000</i>	<i>August 2001</i>
Accommodation, cafes and restaurants	72.2	67.9	81.8	86.7	154.0	154.5
Transport and storage						
Road transport	58.3	56.9	6.3	9.4	64.7	66.3
Rail transport	17.1	14.2	*3.3	*1.7	20.4	15.9
Water transport	*1.7	*2.6	*1.0	*0.0	*2.7	*2.6
Air and Space transport	18.3	17.5	6.1	6.7	24.4	24.2
Other transport	*0.0	*0.0	*0.0	*0.0	*0.0	*0.0
Services to transport	14.8	15.0	13.1	16.5	28.0	31.6
Storage	9.1	7.0	*2.7	*0.7	11.8	7.7
<i>Total</i>	119.3	113.3	32.5	35.0	151.8	148.3
Communication services	44.3	48.1	17.0	18.1	61.2	66.2
Finance and insurance						
Finance	27.6	28.1	40.8	50.4	68.5	78.5
Insurance	11.4	14.6	19.3	18.2	30.7	32.8
Services to finance and insurance	21.9	27.8	23.9	18.4	45.8	46.2
<i>Total</i>	60.9	70.5	84.0	87.0	144.9	157.5
Property and business services						
Property services	28.0	21.2	18.8	20.1	46.9	41.3
Business services	180.5	190.0	155.9	152.2	336.4	342.2
<i>Total</i>	208.5	211.2	174.8	172.4	383.3	383.6
Government administration and defence						
Government administration	47.3	60.2	41.9	38.3	89.2	98.6
Defence	*3.2	*4.0	*3.4	*1.7	6.6	*5.7
<i>Total</i>	50.5	64.2	45.3	40.1	95.8	104.3
Education	71.3	71.2	133.9	140.7	205.3	211.9
Health and community services						
Health services	44.0	57.0	159.2	163.3	203.1	220.3
Community services	11.5	14.0	55.9	65.6	67.4	79.7
<i>Total</i>	55.5	71.1	215.1	228.9	270.6	300.0
Cultural and recreational services						
Motion picture, radio and television services	9.7	12.4	9.9	9.9	19.6	22.3
Libraries, museums and the arts	13.3	12.4	7.7	8.2	21.1	20.7
Sport and recreation	17.4	15.4	12.6	10.0	30.0	25.4
<i>Total</i>	40.4	40.2	30.2	28.2	70.6	68.3
Personal and other services						
Personal services	21.3	22.1	36.9	36.6	58.1	58.7
Other services	38.9	37.1	20.1	24.2	59.0	61.3
Private households employing staff	*0.0	*0.0	*0.0	*0.0	*0.0	*0.0
<i>Total</i>	60.2	59.2	57.0	60.9	117.2	120.1
Total employed(b)	1 701.7	1 710.7	1 329.4	1 340.3	3 031.1	3 051.0

(a) A change in the definition of employed persons has caused an estimated increase of 5,900 employed people in NSW from March 2001 to April 2001.

Major and sub-major occupation group	Males		Females		Persons	
	August 2000	August 2001	August 2000	August 2001	August 2000	August 2001
	'000	'000	'000	'000	'000	'000
Managers and administrators						
Generalist managers	41.5	38.7	4.6	7.1	46.1	45.8
Specialist managers	71.7	84.1	25.2	37.7	96.9	121.8
Farmers and farm managers	47.3	51.0	19.3	15.9	66.6	66.9
<i>Total</i>	160.5	173.8	49.1	60.7	209.6	234.4
Professionals						
Science, building and engineering professionals	45.7	45.3	9.4	8.0	55.1	53.3
Business and information professionals	122.6	127.7	69.6	76.1	192.3	203.8
Health professionals	26.7	29.4	73.6	67.4	100.3	96.8
Education professionals	44.9	44.7	84.0	89.0	128.9	133.7
Social, arts and miscellaneous professionals	51.2	60.4	48.2	47.9	99.4	108.3
<i>Total</i>	291.1	307.5	284.8	288.5	576.0	596.0
Associate professionals						
Science, engineering and related associate professionals	34.7	31.6	8.2	6.9	42.8	38.5
Business and administrative associate professionals	63.9	62.1	56.6	49.1	120.5	111.2
Managing supervisors (sales and service)	88.3	87.4	45.7	48.2	134.0	135.6
Health and welfare associate professionals	*3.8	*4.9	10.2	14.9	14.1	19.7
Other associate professionals	20.6	22.9	*5.1	6.8	25.7	29.7
<i>Total</i>	211.3	208.8	125.8	125.9	337.1	334.7
Tradespersons and related workers						
Mechanical and fabrication engineering tradespersons	64.4	66.1	*0.7	0.7	65.2	66.8
Automotive tradespersons	42.8	44.6	*0.0	*0.0	42.8	44.6
Electrical and electronics tradespersons	68.0	59.6	*2.0	*1.0	70.0	60.6
Construction tradespersons	96.0	91.0	*1.0	*0.4	96.9	91.4
Food tradespersons	20.5	22.3	7.3	8.7	27.8	31.0
Skilled agricultural and horticultural workers	22.1	20.8	*1.0	*2.5	23.1	23.3
Other tradespersons and related workers	47.0	34.9	22.6	19.2	69.6	54.2
<i>Total</i>	360.9	339.3	34.6	32.5	395.5	371.7
Advanced clerical and service workers						
Secretaries and personal assistants	*1.7	*1.0	87.8	81.7	89.5	82.7
Other advanced clerical and service workers	12.3	16.9	46.2	49.7	58.6	66.6
Intermediate clerical, sales and service workers	159.7	154.7	379.2	402.1	538.9	556.8
Intermediate clerical workers	83.9	74.8	239.3	246.1	323.2	320.9
Intermediate sales and related workers	36.9	40.5	15.7	17.8	52.7	58.4
Intermediate service workers	38.8	39.3	124.2	138.2	163.0	177.6
<i>Total</i>	14.0	17.9	134.0	131.4	148.0	149.3
Intermediate production and transport workers						
Intermediate plant operators	64.6	63.3	*2.6	*1.3	67.2	64.6
Intermediate machine operators	15.5	17.1	9.4	8.8	24.8	25.9
Road and rail transport drivers	89.5	91.8	*5.2	*5.0	94.6	96.8
Other intermediate production and transport workers	58.3	65.4	10.2	10.4	68.5	75.8
<i>Total</i>	227.8	237.6	27.4	25.5	255.2	263.1
Elementary clerical, sales and service workers						
Elementary clerks	12.3	15.5	16.4	14.5	28.7	30.0
Elementary sales workers	64.3	58.6	163.8	157.7	228.1	216.2
Elementary service workers	21.9	26.3	14.5	9.0	36.4	35.3
<i>Total</i>	98.5	100.4	194.7	181.2	293.2	281.6
Labourers and related workers						
Cleaners	32.3	31.4	39.6	38.6	71.8	70.0
Factory labourers	39.4	33.2	28.6	21.9	68.0	55.1
Other labourers and related workers	106.2	106.3	31.6	32.0	137.8	138.3
<i>Total</i>	177.9	170.8	99.8	92.6	277.6	263.4
Total employed	1 701.7	1 710.7	1 329.4	1 340.3	3 031.1	3 051.0

(a) A change in the definition of employed persons has caused an estimated increase of 5,900 employed people in NSW from March 2001 to April 2001.

10

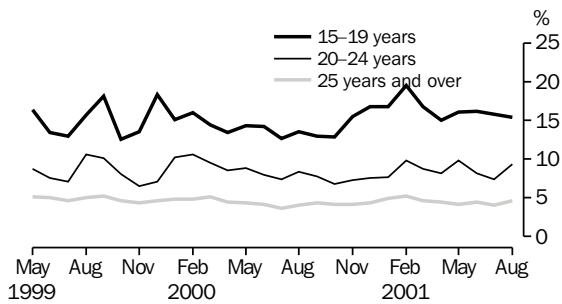
UNEMPLOYED PERSONS, AGE, NSW

Month	Age group (years)						Total unemployed '000
	15-19 '000	20-24 '000	25-34 '000	35-44 '000	45-54 '000	55 and over '000	
MALES							
2000							
August	16.4	19.1	23.4	18.5	14.1	6.0	97.5
2001							
May	20.1	23.0	23.2	16.9	15.7	9.0	107.8
June	20.7	19.7	23.2	18.0	18.4	10.1	110.0
July	19.8	16.5	21.3	17.5	18.0	10.7	103.8
August	16.4	18.0	23.5	20.9	15.7	8.5	103.0
FEMALES							
2000							
August	16.5	10.8	14.9	13.2	9.3	*2.6	67.3
2001							
May	20.4	13.9	15.7	17.2	9.0	*2.9	79.1
June	19.4	10.9	16.7	17.7	12.2	*1.9	78.7
July	19.2	11.2	11.1	14.8	11.8	*2.5	70.6
August	20.5	15.8	19.3	18.6	11.7	*2.3	88.3
PERSONS							
2000							
August	32.9	29.9	38.3	31.7	23.5	8.6	164.9
2001							
May	40.5	36.9	39.0	34.0	24.6	11.9	186.9
June	40.1	30.6	39.8	35.7	30.6	12.0	188.8
July	39.0	27.8	32.4	32.2	29.8	13.2	174.4
August	36.9	33.9	42.8	39.5	27.4	10.8	191.3

UNEMPLOYED PERSONS, UNEMPLOYMENT RATE BY AGE, NSW

Month	Age group (years)						Total unemployment rate %
	15-19 %	20-24 %	25-34 %	35-44 %	45-54 %	55 and over %	
MALES							
2000							
August	14.1	10.0	5.2	4.1	3.7	2.8	5.4
2001							
May	16.1	11.6	5.2	3.7	4.1	4.1	5.9
June	16.5	10.0	5.2	3.9	4.8	4.7	6.0
July	15.6	8.2	4.8	3.8	4.7	4.8	5.7
August	13.7	9.3	5.3	4.6	4.1	3.9	5.7
FEMALES							
2000							
August	13.0	6.5	4.3	3.8	3.1	*2.3	4.8
2001							
May	16.1	7.8	4.4	4.9	3.1	*2.5	5.6
June	15.8	6.1	4.7	5.0	4.1	*1.6	5.5
July	16.0	6.5	3.1	4.2	4.0	*2.0	5.0
August	17.0	9.3	5.4	5.3	3.8	*1.9	6.2
PERSONS							
2000							
August	13.6	8.4	4.8	3.9	3.5	2.6	5.1
2001							
May	16.1	9.8	4.8	4.2	3.7	3.6	5.8
June	16.2	8.2	5.0	4.4	4.5	3.6	5.8
July	15.8	7.4	4.1	4.0	4.4	3.8	5.4
August	15.4	9.3	5.3	4.9	4.0	3.2	5.9

UNEMPLOYMENT RATE BY AGE, NSW



12

UNEMPLOYED PERSONS, INDUSTRY AND OCCUPATION OF LAST JOB, NSW, AUGUST 2001

	<i>Males</i>	<i>Females</i>	<i>Persons</i>
Industry division			
Agriculture, forestry and fishing	*1.5	*1.1	*2.6
Mining	*0.4	*0.0	*0.4
Manufacturing	11.8	*4.2	16.0
Construction	10.9	*0.4	11.3
Wholesale trade	*4.1	*2.1	6.2
Retail trade	8.5	10.3	18.8
Accommodation, cafes and restaurants	*5.5	6.4	11.9
Transport and storage	*3.2	*1.1	*4.3
Communication services	*1.5	*0.3	*1.8
Finance and insurance	*1.9	*2.0	*3.9
Property and business services	10.2	*5.8	16.0
Government administration and defence	*1.1	*0.3	*1.5
Education	*2.5	*2.0	*4.5
Health and community services	*1.0	*5.4	6.4
Cultural and recreational services	*2.2	*3.1	*5.3
Personal and other services	*0.9	*2.7	*3.6
Major occupation group			
Managers and administrators	*0.4	*0.4	*0.7
Professionals	8.0	*5.4	13.5
Associate professionals	*4.0	*1.4	*5.4
Tradespersons and related workers	18.2	*3.0	21.2
Advanced clerical and service workers	*0.0	*2.1	*2.1
Intermediate clerical, sales and service workers	7.5	16.4	23.9
Intermediate production and transport workers	7.3	*1.1	8.4
Elementary clerical, sales and service workers	6.4	11.2	17.7
Labourers and related workers	15.2	6.6	21.8
Duration of unemployment			
Worked for two weeks or more in the previous two years	67.1	47.6	114.7
Worked for two weeks or more over two years ago	26.4	23.3	49.7
Never worked for two weeks or more	9.5	17.4	26.9
Total unemployed	103.0	88.3	191.3

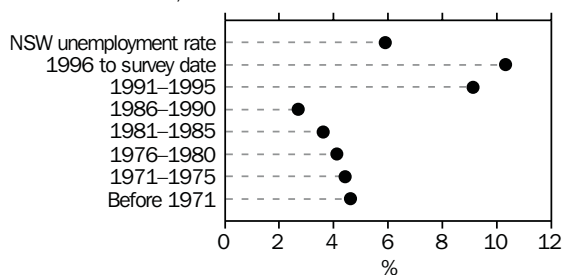
13

UNEMPLOYED PERSONS, DURATION OF UNEMPLOYMENT, NSW, AUGUST 2001

<i>Duration of unemployment (weeks)</i>	<i>Males</i>	<i>Females</i>	<i>Persons</i>
	'000	'000	'000
Under 4	20.4	20.1	40.5
4 and under 8	19.3	15.2	34.4
8 and under 13	9.4	8.0	17.3
13 and under 26	16.2	12.6	28.9
26 and under 52	12.5	18.1	30.6
<i>Total</i>	77.7	74.0	151.7
52 and over	25.3	14.3	39.6
52 and under 104	*5.1	*5.7	10.8
104 and over	20.2	8.6	28.8
Total employed	103.0	88.3	191.3
	weeks	weeks	weeks
Average	59.7	37.1	49.3

	June 2001	July 2001	August 2001
	%	%	%
Birthplace			
Australia	5.9	5.4	6.1
Outside Australia	5.9	5.2	5.5
Main English speaking countries	4.1	4.1	4.4
Other countries	6.2	5.7	6.0
Period of arrival of overseas born			
Before 1971	3.7	3.4	4.6
1971-1975	3.4	3.8	4.4
1976-1980	4.0	3.0	4.1
1981-1985	5.5	5.7	3.6
1986-1990	4.7	5.1	2.7
1991-1995	8.7	5.4	9.1
1996 to survey date	8.7	9.6	10.3
Total unemployment rate	5.8	5.4	5.9

UNEMPLOYMENT RATE BY PERIOD OF ARRIVAL OF OVERSEAS BORN, NSW—AUGUST 2001



UNEMPLOYED PERSONS, DURATION OF UNEMPLOYMENT BY AGE, NSW

	Duration of unemployment (weeks)					Total unemployed persons '000	Average duration weeks
	Under 13	13 and under 26	26 and under 39	39 and under 104	104 and over		
	'000	'000	'000	'000	'000		
15-19							
2001							
June	18.6	10.6	*4.0	*4.9	*2.0	40.1	8.0
July	21.8	8.7	*5.0	*2.3	*1.1	39.0	7.8
August	18.9	*4.9	8.9	*3.5	*0.7	36.9	7.4
20-24							
2001							
June	16.3	*5.8	*0.8	*2.6	*5.2	30.6	6.1
July	11.2	10.1	*1.5	*3.7	*1.2	27.8	5.5
August	17.3	6.0	*4.9	*1.0	*4.6	33.9	6.8
25-34							
2001							
June	17.2	8.1	*3.1	*5.2	6.1	39.8	7.9
July	14.1	6.7	*3.3	*2.8	*5.5	32.4	6.5
August	20.3	5.6	*3.8	*5.9	7.2	42.8	8.6
35-44							
2001							
June	12.5	7.9	*5.0	*3.7	6.6	35.7	7.1
July	11.6	*4.5	*5.6	*4.9	*5.7	32.2	6.5
August	19.6	*5.9	*3.8	*3.8	6.4	39.5	7.9
45 AND OVER							
2001							
June	13.5	7.9	*2.4	6.8	12.1	42.6	8.5
July	17.4	7.7	*2.4	*4.1	11.5	43.1	8.6
August	16.1	6.5	*2.8	*3.1	9.8	38.3	7.7
TOTAL							
2001							
June	78.1	40.3	15.2	23.2	31.9	188.8	37.7
July	76.1	37.7	17.7	17.9	24.9	174.4	34.9
August	92.3	28.9	24.2	17.2	28.8	191.3	38.3

Month	Employed			Unemployed			Labour force	Unemployment rate	Participation rate
	Full-time workers	Part-time workers	Total	Looking for full-time work	Looking for part-time work	Total			
	'000	'000	'000	'000	'000	'000	'000	%	%
MALES									
2001									
May	978.8	149.4	1 128.2	51.1	7.4	58.6	1 186.8	4.9	73.1
June	985.0	146.7	1 131.8	55.6	10.1	65.7	1 197.5	5.5	73.6
July	985.6	159.3	1 144.9	51.6	6.7	58.3	1 203.2	4.8	73.9
August	978.9	158.8	1 137.7	48.6	8.2	56.8	1 194.5	4.8	73.2
MARRIED FEMALES									
2001									
May	298.4	218.8	517.2	12.0	*5.4	17.3	534.5	3.2	57.2
June	310.1	219.7	529.8	11.2	*5.7	16.9	546.7	3.1	58.2
July	312.6	218.6	531.3	10.7	*5.4	16.0	547.3	2.9	58.7
August	304.5	220.3	524.9	12.6	*5.5	18.1	542.9	3.3	58.0
ALL FEMALES									
2001									
May	553.0	343.4	896.4	28.9	16.8	45.7	942.2	4.9	56.1
June	563.0	347.6	910.5	24.9	15.8	40.7	951.2	4.3	56.6
July	570.6	338.5	909.2	25.4	12.4	37.8	947.0	4.0	56.3
August	557.6	350.1	907.7	31.8	15.8	47.6	955.4	5.0	56.7
PERSONS									
2001									
May	1 531.8	492.8	2 024.6	80.0	24.3	104.3	2 129.0	4.9	64.5
June	1 548.0	494.3	2 042.3	80.5	25.9	106.4	2 148.7	5.0	65.0
July	1 556.3	497.9	2 054.1	77.0	19.1	96.1	2 150.2	4.5	64.9
August	1 536.5	508.9	2 045.4	80.4	24.0	104.4	2 149.9	4.9	64.8

Month	Employed			Unemployed			Labour force	Unemployment rate	Participation rate
	Full-time workers	Part-time workers	Total	Looking for full-time work	Looking for part-time work	Total			
	'000	'000	'000	'000	'000	'000	'000	%	%
MALES									
2001									
May	499.2	85.7	584.9	37.9	11.3	49.2	634.1	7.8	67.8
June	494.3	87.0	581.3	36.1	8.3	44.3	625.6	7.1	66.8
July	499.2	88.2	587.4	35.9	9.6	45.5	632.9	7.2	67.6
August	487.3	85.7	573.0	40.2	6.0	46.2	619.2	7.5	66.1
MARRIED FEMALES									
2001									
May	153.1	145.8	298.9	7.6	*3.4	11.0	309.9	3.6	54.3
June	150.0	144.3	294.3	8.5	*3.6	12.1	306.4	3.9	54.0
July	147.0	154.9	301.9	6.2	*2.9	9.2	311.0	2.9	54.2
August	137.4	157.0	294.4	8.2	*4.3	12.5	306.9	4.1	53.6
ALL FEMALES									
2001									
May	228.4	219.8	448.2	21.3	12.1	33.4	481.6	6.9	50.4
June	229.0	214.1	443.1	25.4	12.6	38.1	481.2	7.9	50.3
July	220.1	221.7	441.8	21.9	10.9	32.8	474.6	6.9	49.6
August	208.8	223.8	432.6	27.7	13.0	40.7	473.2	8.6	49.5
PERSONS									
2001									
May	727.6	305.5	1 033.1	59.2	23.4	82.6	1 115.7	7.4	59.0
June	723.3	301.1	1 024.4	61.5	20.9	82.4	1 106.8	7.4	58.5
July	719.3	309.9	1 029.2	57.7	20.6	78.3	1 107.6	7.1	58.5
August	696.1	309.5	1 005.6	67.9	19.0	86.9	1 092.5	8.0	57.7

	<i>Males</i>	<i>Females</i>	<i>Persons</i>
<i>Industry division and major occupation group</i>	<i>'000</i>	<i>'000</i>	<i>'000</i>
SYDNEY (MSR)			
Industry			
Agriculture, forestry and fishing	8.3	*5.3	13.6
Mining	*2.9	*0.3	*3.2
Manufacturing	160.7	73.1	233.8
Electricity, gas and water supply	10.9	*3.5	14.4
Construction	136.8	19.3	156.1
Wholesale trade	79.0	35.7	114.7
Retail trade	140.6	141.3	281.9
Accommodation, cafes and restaurants	47.4	52.6	100.0
Transport and storage	80.1	30.0	110.1
Communication services	39.5	13.4	52.9
Finance and insurance	62.8	71.9	134.7
Property and business services	168.2	138.2	306.5
Government administration and defence	33.4	24.0	57.4
Education	45.8	90.3	136.2
Health and community services	51.7	141.5	193.2
Cultural and recreational services	28.3	21.5	49.8
Personal and other services	41.2	45.8	86.9
Occupation			
Managers and administrators	98.7	38.1	136.7
Professionals	244.1	213.0	457.1
Associate professionals	148.7	83.4	232.1
Tradespersons and related workers	216.1	20.4	236.4
Advanced clerical and service workers	14.6	91.1	105.7
Intermediate clerical, sales and service workers	111.0	280.0	391.1
Intermediate production and transport workers	139.7	17.4	157.1
Elementary clerical, sales and service workers	72.0	109.7	181.7
Labourers and related workers	93.0	54.6	147.6
Total employed	1 137.7	907.7	2 045.4
BALANCE OF NSW (MSR)			
Industry			
Agriculture, forestry and fishing	84.2	31.5	115.6
Mining	16.2	*0.4	16.6
Manufacturing	85.2	21.9	107.1
Electricity, gas and water supply	7.5	*0.8	8.3
Construction	59.3	10.3	69.6
Wholesale trade	27.9	7.8	35.6
Retail trade	74.3	91.3	165.7
Accommodation, cafes and restaurants	20.5	34	54.5
Transport and storage	33.2	*5.1	38.3
Communication services	8.6	*4.7	13.3
Finance and insurance	7.7	15.1	22.8
Property and business services	43	34.1	77.1
Government administration and defence	30.8	16.1	46.9
Education	25.4	50.4	75.8
Health and community services	19.4	87.4	106.7
Cultural and recreational services	11.9	6.7	18.6
Personal and other services	18	15.1	33.1
Occupation			
Managers and administrators	75.1	22.6	97.7
Professionals	63.4	75.4	138.9
Associate professionals	60.1	42.5	102.6
Tradespersons and related workers	123.2	12.1	135.3
Advanced clerical and service workers	*3.4	40.3	43.6
Intermediate clerical, sales and service workers	43.7	122.1	165.7
Intermediate production and transport workers	97.8	8.1	106.0
Elementary clerical, sales and service workers	28.4	71.5	99.9
Labourers and related workers	77.9	37.9	115.8
Total employed	573.0	432.6	1 005.6

	<i>Employed</i>	<i>Unemployed</i>	<i>Labour force</i>	<i>Unemployment rate</i>	<i>Participation rate</i>
<i>Month</i>	'000	'000	'000	%	%
INNER SYDNEY AND INNER WESTERN SYDNEY (SRs)					
Males					
May	139.5	5.0	144.5	3.5	75.9
June	140.7	5.4	146.1	3.7	74.4
July	147.8	6.7	154.5	4.3	74.9
August	148.2	6.9	155.1	4.5	72.8
Females					
May	122.6	4.6	127.2	3.6	65.4
June	123.7	*2.7	126.4	*2.1	63.1
July	119.2	*3.8	122.9	*3.1	63.3
August	123.4	4.6	128.0	3.6	64.8
Persons					
May	262.2	9.6	271.8	3.5	70.6
June	264.4	8.1	272.6	3.0	68.7
July	267.0	10.4	277.4	3.8	69.3
August	271.5	11.5	283.1	4.1	69.0
INNER SYDNEY (SR)					
Males					
May	90.2	4.0	94.2	4.3	77.8
June	91.3	*3.7	95.1	*3.9	76.2
July	99.7	3.9	103.6	3.8	76.7
August	100.6	4.8	105.4	4.6	73.4
Females					
May	81.3	*2.7	84.0	*3.2	68.2
June	80.3	*1.7	81.9	*2.1	66.2
July	77.4	*2.3	79.8	*2.9	66.7
August	81.1	*3.3	84.4	*3.9	68.4
Persons					
May	171.5	6.7	178.2	3.7	73.0
June	171.6	5.4	177.0	3.1	71.2
July	177.1	6.3	183.4	3.4	72.0
August	181.6	8.1	189.7	4.3	71.1
EASTERN SUBURBS (SR)					
Males					
May	54.5	*1.4	55.9	*2.5	66.5
June	61.0	*1.3	62.3	*2.1	71.5
July	61.2	3.0	64.2	4.7	72.2
August	59.3	*1.7	61.1	*2.9	70.3
Females					
May	52.1	*2.0	54.1	*3.7	56.5
June	58.3	*2.0	60.3	*3.4	60.6
July	58.5	*2.1	60.6	*3.4	58.5
August	59.3	3.4	62.8	5.4	61.7
Persons					
May	106.7	3.4	110.1	3.1	61.2
June	119.3	3.3	122.7	2.7	65.7
July	119.7	5.1	124.8	4.1	64.8
August	118.7	5.2	123.8	4.2	65.7

For footnotes see end of table.

...continued

<i>Month</i>	<i>Employed</i> '000	<i>Unemployed</i> '000	<i>Labour force</i> '000	<i>Unemployment rate</i> %	<i>Participation rate</i> %
ST GEORGE—SUTHERLAND (SR)					
Males					
May	117.9	5.6	123.5	4.6	72.7
June	115.4	4.7	120.1	3.9	71.2
July	115.0	6.5	121.5	5.4	73.3
August	111.5	4.1	115.6	3.5	71.9
Females					
May	100.7	3.4	104.1	3.3	57.2
June	99.6	3.4	103.0	3.3	58.2
July	102.0	*1.4	103.5	*1.4	57.2
August	95.9	3.1	99.0	3.2	56.1
Persons					
May	218.5	9.1	227.6	4.0	64.7
June	215.0	8.1	223.1	3.6	64.6
July	217.0	8.0	225.0	3.5	64.9
August	207.4	7.2	214.6	3.4	63.6
CANTERBURY—BANKSTOWN (SR)					
Males					
May	73.9	6.1	80.0	7.6	67.2
June	78.4	6.7	85.1	7.9	67.4
July	78.0	5.1	83.2	6.2	66.7
August	76.5	4.9	81.4	6.0	64.3
Females					
May	50.8	*1.3	52.1	*2.6	42.4
June	51.6	*1.8	53.4	*3.3	43.3
July	54.2	*1.8	56.0	*3.2	44.8
August	54.4	*2.2	56.7	*3.9	45.9
Persons					
May	124.7	7.5	132.1	5.6	54.6
June	130.0	8.5	138.5	6.1	55.5
July	132.2	6.9	139.1	5.0	55.7
August	130.9	7.1	138.0	5.1	55.3
FAIRFIELD—LIVERPOOL AND OUTER SOUTH WESTERN SYDNEY (SRs)					
Males					
May	155.5	13.4	168.9	7.9	73.3
June	161.3	17.8	179.1	10.0	74.9
July	159.7	12.6	172.3	7.3	72.8
August	157.7	14.3	172.0	8.3	74.3
Females					
May	114.2	12.3	126.5	9.7	54.0
June	116.7	13.0	129.7	10.0	54.6
July	119.1	10.3	129.5	8.0	53.9
August	120.9	15.7	136.6	11.5	56.3
Persons					
May	269.7	25.7	295.4	8.7	63.5
June	278.0	30.8	308.8	10.0	64.8
July	278.8	23.0	301.8	7.6	63.3
August	278.6	30.0	308.6	9.7	65.1
For footnotes see end of table.					<i>...continued</i>

<i>Month</i>	<i>Employed</i> '000	<i>Unemployed</i> '000	<i>Labour force</i> '000	<i>Unemployment rate</i> %	<i>Participation rate</i> %
FAIRFIELD—LIVERPOOL (SR)					
Males					
May	89.7	8.4	98.1	8.5	71.2
June	92.0	10.7	102.7	10.4	72.3
July	87.3	6.7	94.0	7.1	68.1
August	88.0	7.9	95.9	8.3	70.8
Females					
May	61.9	8.0	69.9	11.5	48.9
June	63.1	7.8	70.9	11.0	49.7
July	66.2	4.9	71.1	6.9	49.4
August	68.9	9.3	78.2	11.9	53.0
Persons					
May	151.6	16.4	168.0	9.7	59.9
June	155.1	18.5	173.6	10.7	61.0
July	153.5	11.6	165.1	7.0	58.6
August	156.9	17.2	174.1	9.9	61.5
CENTRAL WESTERN SYDNEY (SR)					
Males					
May	75.1	3.3	78.4	4.2	63.6
June	71.5	4.4	75.9	5.8	63.6
July	71.3	3.0	74.3	4.1	63.0
August	69.9	*1.4	71.4	*2.0	61.6
Females					
May	53.1	3.4	56.5	6.1	48.3
June	51.1	*1.4	52.4	*2.6	46.7
July	52.3	*2.0	54.3	3.7	48.4
August	52.6	*1.3	53.9	*2.4	47.6
Persons					
May	128.2	6.7	134.9	5.0	56.1
June	122.6	5.8	128.4	4.5	55.4
July	123.6	5.0	128.6	3.9	55.9
August	122.6	2.8	125.3	2.2	54.7
OUTER WESTERN SYDNEY (SR) AND BLACKTOWN (C)					
Males					
May	160.9	8.7	169.7	5.2	75.0
June	161.1	11.5	172.7	6.7	76.4
July	164.6	8.2	172.7	4.7	77.5
August	169.3	8.0	177.3	4.5	78.8
Females					
May	122.0	5.7	127.6	4.4	55.6
June	124.0	6.3	130.2	4.8	56.0
July	128.9	6.4	135.3	4.7	56.5
August	123.4	7.0	130.4	5.3	56.1
Persons					
May	282.9	14.4	297.3	4.8	65.2
June	285.1	17.8	302.9	5.9	66.1
July	293.5	14.5	308.0	4.7	66.6
August	292.8	15.0	307.7	4.9	67.3

For footnotes see end of table.

...continued

<i>Month</i>	<i>Employed</i> '000	<i>Unemployed</i> '000	<i>Labour force</i> '000	<i>Unemployment rate</i> %	<i>Participation rate</i> %
LOWER NORTHERN SYDNEY (SR)					
Males					
May	84.4	*2.5	86.9	*2.9	77.6
June	84.4	*2.9	87.3	*3.4	77.5
July	80.0	4.5	84.5	5.3	79.7
August	81.3	4.4	85.7	5.1	79.4
Females					
May	69.7	3.6	73.3	4.8	60.8
June	74.0	*3.0	77.0	*3.9	62.9
July	70.9	*1.7	72.7	*2.4	62.5
August	71.7	*1.5	73.2	*2.1	61.9
Persons					
May	154.1	6.1	160.2	3.8	68.9
June	158.4	5.9	164.3	3.6	69.9
July	150.9	6.2	157.1	4.0	70.7
August	153.0	5.9	158.9	3.7	70.2
HORNSBY—KU-RING-GAI (SR) AND BAULKHAM HILLS (A)					
Males					
May	124.9	6.2	131.1	4.7	79.5
June	122.8	3.7	126.5	3.0	81.2
July	124.6	*1.8	126.4	1.5	80.7
August	121.6	3.3	124.9	2.6	79.6
Females					
May	101.0	3.8	104.8	3.7	62.5
June	103.0	3.4	106.5	3.2	63.8
July	98.7	3.1	101.8	3.1	62.5
August	97.0	3.4	100.4	3.4	62.2
Persons					
May	225.9	10.0	235.9	4.2	71.0
June	225.8	7.2	233.0	3.1	72.2
July	223.2	5.0	228.2	2.2	71.4
August	218.6	6.7	225.3	3.0	70.8
NORTHERN BEACHES (SR)					
Males					
May	69.5	*1.1	70.6	*1.5	77.3
June	64.6	*0.7	65.3	*1.1	78.6
July	68.5	*1.1	69.6	*1.6	78.7
August	70.4	*0.7	71.2	*1	78.0
Females					
May	56.0	*1.4	57.4	*2.4	59.0
June	55.7	*1.1	56.8	*1.9	58.8
July	55.7	*1.4	57.0	*2.4	59.5
August	57.7	*1.7	59.4	*2.8	58.3
Persons					
May	125.5	*2.4	127.9	*1.9	67.9
June	120.3	*1.8	122.1	*1.5	68.0
July	124.2	*2.5	126.7	*2.0	68.7
August	128.1	*2.4	130.5	*1.8	67.6
For footnotes see end of table.					<i>...continued</i>

<i>Month</i>	<i>Employed</i> '000	<i>Unemployed</i> '000	<i>Labour force</i> '000	<i>Unemployment rate</i> %	<i>Participation rate</i> %
GOSFORD—WYONG (SR)					
Males					
May	72.0	5.2	77.2	6.7	68.4
June	70.6	6.4	76.9	8.3	68.9
July	74.2	5.7	79.9	7.1	69.6
August	71.9	7.0	78.9	8.9	67.7
Females					
May	54.3	4.2	58.5	7.2	50.1
June	52.8	2.6	55.5	4.8	49.7
July	49.7	3.8	53.5	7.0	47.7
August	51.4	3.7	55.0	6.7	47.4
Persons					
May	126.3	9.4	135.7	6.9	59.1
June	123.4	9.0	132.4	6.8	59.3
July	124.0	9.4	133.4	7.1	58.8
August	123.2	10.7	134.0	8.0	57.6
HUNTER (SR)					
Males					
May	141.9	14.8	156.6	9.4	67.2
June	130.0	14.6	144.6	10.1	64.1
July	136.6	14.5	151.2	9.6	64.9
August	134.6	13.7	148.3	9.2	64.0
Females					
May	107.9	13.6	121.4	11.2	51.4
June	107.4	11.0	118.4	9.3	52.4
July	101.5	11.7	113.2	10.3	49.8
August	99.2	15.5	114.8	13.5	49.0
Persons					
May	249.8	28.3	278.1	10.2	59.2
June	237.4	25.7	263.0	9.8	58.2
July	238.2	26.2	264.3	9.9	57.5
August	233.9	29.2	263.1	11.1	56.4
NEWCASTLE (SRS)					
Males					
May	114.2	12.4	126.5	9.8	66.6
June	107.5	12.2	119.6	10.2	64.9
July	114.7	12.1	126.8	9.5	66.0
August	115.0	11.1	126.1	8.8	65.4
Females					
May	91.9	12.6	104.5	12.0	52.4
June	93.3	10.4	103.8	10.0	54.2
July	89.0	10.9	99.9	10.9	51.8
August	86.1	14.8	101.0	14.7	50.4
Persons					
May	206.1	24.9	231.0	10.8	59.3
June	200.8	22.6	223.4	10.1	59.4
July	203.7	23.0	226.7	10.1	58.9
August	201.1	25.9	227.0	11.4	57.8
For footnotes see end of table.					<i>...continued</i>

<i>Month</i>	<i>Employed</i> '000	<i>Unemployed</i> '000	<i>Labour force</i> '000	<i>Unemployment rate</i> %	<i>Participation rate</i> %
ILLAWARRA AND SOUTH EASTERN (SRs)(b)					
Males					
May	147.3	10.1	157.4	6.4	68.1
June	142.5	10.0	152.5	6.6	65.8
July	142.9	8.4	151.4	5.6	66.9
August	138.1	9.4	147.5	6.4	65.7
Females					
May	109.7	5.6	115.3	4.9	49.1
June	107.4	10.8	118.2	9.2	49.9
July	107.4	7.4	114.9	6.5	47.9
August	109.1	9.7	118.8	8.2	50.0
Persons					
May	257.1	15.7	272.7	5.8	58.5
June	249.9	20.8	270.7	7.7	57.8
July	250.4	15.9	266.2	6.0	57.1
August	247.2	19.1	266.4	7.2	57.6
ILLAWARRA (SR)					
Males					
May	102.4	7.2	109.6	6.5	67.5
June	96.3	6.5	102.8	6.3	64.5
July	96.9	6.4	103.3	6.2	65.4
August	97.6	5.9	103.5	5.7	65.0
Females					
May	79.7	3.9	83.6	4.6	50.6
June	74.9	7.9	82.8	9.6	50.0
July	71.6	6.1	77.7	7.8	47.0
August	76.2	5.2	81.4	6.4	48.8
Persons					
May	182.1	11.0	193.1	5.7	58.9
June	171.2	14.4	185.6	7.8	57.1
July	168.5	12.5	181.0	6.9	56.0
August	173.8	11.1	184.9	6.0	56.7
WOLLONGONG (SRS)					
Males					
May	79.5	5.3	84.7	6.2	71.5
June	73.9	4.7	78.6	5.9	67.7
July	74.7	5.2	79.9	6.5	69.4
August	77.3	4.0	81.3	4.9	69.9
Females					
May	59.0	3.9	62.8	6.2	51.0
June	57.1	5.8	62.9	9.3	51.2
July	52.4	4.3	56.6	7.5	46.6
August	58.3	3.9	62.2	6.3	51.9
Persons					
May	138.4	9.1	147.6	6.2	61.1
June	131.0	10.5	141.5	7.4	59.2
July	127.1	9.4	136.5	6.9	57.7
August	135.6	7.9	143.5	5.5	60.8
For footnotes see end of table.					<i>...continued</i>

<i>Month</i>	<i>Employed</i> '000	<i>Unemployed</i> '000	<i>Labour force</i> '000	<i>Unemployment rate</i> %	<i>Participation rate</i> %
RICHMOND—TWEED AND MID-NORTH COAST (SRs)					
Males					
May	96.4	11.2	107.7	10.4	62.1
June	98.9	8.0	106.9	7.5	61.5
July	106.7	8.4	115.1	7.3	63.0
August	101.0	13.0	114.0	11.4	64.2
Females					
May	83.2	7.2	90.4	7.9	47.4
June	84.1	8.7	92.8	9.4	47.3
July	87.8	7.7	95.5	8.0	48.8
August	84.2	8.9	93.1	9.5	48.8
Persons					
May	179.7	18.4	198.1	9.3	54.4
June	183.0	16.7	199.7	8.4	53.9
July	194.5	16.1	210.6	7.6	55.7
August	185.2	21.9	207.1	10.6	56.2
NORTHERN, FAR WEST—NORTH WESTERN AND CENTRAL WEST (SRs)					
Males					
May	121.4	6.7	128.0	5.2	68.5
June	129.1	7.5	136.6	5.5	71.5
July	119.4	9.0	128.3	7.0	72.2
August	125.1	3.8	129.0	3.0	68.0
Females					
May	90.4	*4.5	94.9	*4.7	50.9
June	88.8	*4.8	93.6	*5.2	49.8
July	89.8	*2.3	92.1	*2.5	49.7
August	86.5	*4.0	90.5	*4.4	47.7
Persons					
May	211.8	11.1	222.9	5.0	59.7
June	217.9	12.4	230.3	5.4	60.7
July	209.1	11.3	220.4	5.1	60.7
August	211.6	7.9	219.5	3.6	57.8
MURRAY—MURRUMBIDGEE (SR)					
Males					
May	77.8	6.5	84.3	7.7	76.0
June	80.7	*4.2	84.9	*4.9	74.3
July	81.7	*5.2	87.0	*6.0	74.4
August	74.1	6.3	80.4	7.8	71.6
Females					
May	57.0	*2.6	59.6	*4.4	55.7
June	55.5	*2.7	58.1	*4.6	53.3
July	55.3	*3.7	59.0	*6.3	54.5
August	53.5	*2.5	56.0	*4.5	53.8
Persons					
May	134.8	9.1	143.9	6.3	66.0
June	136.2	6.8	143.0	4.8	64.0
July	137.0	9.0	146.0	6.1	64.8
August	127.7	8.8	136.5	6.4	63.0

For footnotes see end of table.

...continued

	<i>Employed</i>	<i>Unemployed</i>	<i>Labour force</i>	<i>Unemployment rate</i>	<i>Participation rate</i>
<i>Month</i>	'000	'000	'000	%	%
AUSTRALIAN CAPITAL TERRITORY AND SOUTH EASTERN (SRs)(b)					
Males					
May	132.3	9.5	141.8	6.7	75.4
June	133.3	9.8	143.1	6.9	74.7
July	132.8	8.4	141.1	5.9	75.2
August	127.5	8.9	136.4	6.5	73.8
Females					
May	109.9	4.8	114.7	4.2	59.0
June	113.3	6.4	119.7	5.3	61.0
July	114.8	4.9	119.7	4.1	60.0
August	111.9	7.1	119.0	5.9	60.7
Persons					
May	242.2	14.3	256.5	5.6	67.0
June	246.6	16.2	262.8	6.2	67.8
July	247.6	13.3	260.9	5.1	67.3
August	239.4	15.9	255.3	6.2	67.0

(a) While the Labour Force Survey is designed primarily to produce reliable estimates at the national and State/Territory level, it also delivers estimates for a number of regions within States. As with national and State estimates, regional labour force estimates are subject to sampling error. Since estimates for regions are components of corresponding estimates at the State level — and are thus based on a considerably smaller sample size — they are subject to higher relative standard error. Care should therefore be taken in interpretation of regional estimates, particularly month to month movements. Tables of standard errors are included in the Technical Note on pages 62–64 of this publication.

(b) Estimates for the South Eastern (SR) are not published separately. Data for the South Eastern (SR) are included in ACT and South Eastern (SRs) and Illawarra and South Eastern (SRs).

	Employed			Unemployed			Labour force	Not in labour force	Civilian population aged 15 and over	Unemployment rate	Participation rate
	Full-time workers	Part-time workers	Total	Looking for full-time work	Looking for part-time work	Total					
	'000	'000	'000	'000	'000	'000					
MALES											
August 2000											
June	74.5	13.7	88.2	3.8	1.2	5.1	93.3	25.3	118.6	5.4	78.7
July	75.9	13.4	89.3	3.0	1.2	4.2	93.5	25.2	118.7	4.5	78.7
August	75.8	14.0	89.7	3.4	*0.5	3.9	93.7	25.2	118.9	4.2	78.8
2001											
May	74.2	13.2	87.4	5.1	1.5	6.6	94.0	25.3	119.2	7.0	78.8
June	72.5	14.5	87.0	4.9	1.5	6.3	93.4	25.9	119.3	6.8	78.3
July	72.8	14.0	86.7	4.4	1.9	6.3	93.1	26.4	119.5	6.8	77.9
August	72.7	14.3	87.0	4.5	*0.9	5.4	92.3	27.3	119.6	5.8	77.2
MARRIED FEMALES											
August 1997	26.8	15.2	42.0	1.6	*0.5	2.1	44.1	22.1	66.2	4.8	66.6
1998	25.1	18.9	44.0	*1.0	*0.4	1.3	45.3	21.7	67.0	2.9	67.6
1999	27.2	16.9	44.1	*0.8	*0.5	1.3	45.4	23.2	68.6	2.9	66.2
2000											
June	28.0	17.5	45.5	*0.4	*0.5	*0.9	46.4	20.1	66.5	*2.0	69.8
July	30.1	17.3	47.4	*0.7	*0.1	*0.8	48.1	19.4	67.6	*1.6	71.3
August	29.5	19.0	48.5	*0.6	*0.2	*0.8	49.4	19.5	68.9	*1.7	71.6
2001											
May	29.9	17.9	47.9	*0.7	*0.1	*0.8	48.7	22.3	70.9	*1.6	68.6
June	28.3	18.7	47.0	1.1	*0.1	1.2	48.3	21.3	69.6	2.5	69.3
July	28.3	18.3	46.6	*0.8	*0.3	1.1	47.7	23.9	71.7	2.4	66.6
August	27.4	18.6	45.9	*0.5	*0.1	*0.6	46.5	23.5	70.0	*1.3	66.4
ALL FEMALES											
August 1997	45.4	26.8	72.2	3.8	2.2	6.0	78.2	42.4	120.7	7.7	64.8
1998	44.3	29.8	74.1	3.1	1.3	4.4	78.5	42.7	121.2	5.6	64.7
1999	49.9	27.6	77.4	1.6	1.6	3.1	80.6	41.7	122.2	3.9	65.9
2000											
June	50.3	29.0	79.3	1.8	1.4	3.2	82.5	41.4	123.9	3.9	66.6
July	53.3	27.3	80.6	1.8	*0.6	2.4	83.0	41.0	124.1	2.9	66.9
August	51.3	31.2	82.4	1.5	1.2	2.7	85.2	39.0	124.2	3.2	68.6
2001											
May	50.7	29.2	79.9	2.1	*0.9	3.0	83.0	41.8	124.7	3.7	66.5
June	49.6	31.2	80.8	2.8	*0.7	3.5	84.3	40.6	124.9	4.1	67.5
July	48.6	30.3	79.0	2.0	1.6	3.6	82.5	42.5	125.0	4.3	66.0
August	48.5	30.5	79.0	1.6	*1.0	2.6	81.5	43.6	125.1	3.2	65.2
PERSONS											
August 1997	114.9	38.2	153.1	8.8	4.1	13.0	166.1	66.3	232.4	7.8	71.5
1998	112.5	43.5	156.0	7.4	2.8	10.2	166.2	68.2	234.4	6.2	70.9
1999	118.5	42.2	160.7	6.1	3.2	9.2	169.9	67.4	237.3	5.4	71.6
2000											
June	124.8	42.7	167.5	5.6	2.7	8.3	175.8	66.7	242.5	4.7	72.5
July	129.2	40.7	169.9	4.8	1.9	6.6	176.5	66.3	242.8	3.7	72.7
August	127.0	45.1	172.2	4.9	1.7	6.7	178.8	64.2	243.1	3.7	73.6
2001											
May	124.9	42.4	167.3	7.2	2.4	9.6	176.9	67.0	243.9	5.4	72.5
June	122.1	45.7	167.9	7.6	2.2	9.8	177.7	66.5	244.2	5.5	72.8
July	121.4	44.3	165.7	6.4	3.5	9.9	175.6	68.9	244.5	5.6	71.8
August	121.2	44.8	165.9	6.0	1.9	7.9	173.9	70.9	244.7	4.6	71.0

<i>Month</i>	<i>Employed</i> '000	<i>Unemployed</i> '000	<i>Labour force</i> '000	<i>Unemployment rate</i> %	<i>Participation rate</i> %
MALES					
May					
1997	81.2	6.7	87.9	7.6	78.7
1998	81.2	6.7	87.9	7.6	77.6
1999	84.3	5.6	89.9	6.3	78.2
2000					
June	88.2	4.8	93.0	5.2	78.5
July	88.6	4.7	93.3	5.1	78.6
August	89.1	4.6	93.7	4.9	78.8
September	89.4	4.6	94.0	4.9	79.0
October	89.5	4.6	94.1	4.9	79.1
November	89.2	4.7	93.9	5.0	78.9
December	88.8	4.7	93.5	5.1	78.6
2001					
January	88.4	4.8	93.2	5.1	78.4
February	88.1	5.0	93.1	5.3	78.2
March	87.8	5.3	93.1	5.7	78.2
April	87.5	5.7	93.2	6.1	78.3
May	87.3	6.1	93.3	6.5	78.3
June	87.1	6.2	93.3	6.7	78.2
July	87.0	6.2	93.2	6.7	78.0
August	87.1	6.1	93.1	6.5	77.9
FEMALES					
May					
1997	73.3	6.0	79.3	7.6	65.7
1998	74.9	4.2	79.0	5.3	65.2
1999	77.7	3.7	81.4	4.5	66.6
2000					
June	79.6	3.5	83.1	4.2	67.1
July	80.3	3.3	83.7	4.0	67.4
August	81.0	3.2	84.2	3.8	67.8
September	81.5	3.0	84.5	3.6	68.0
October	81.6	3.0	84.5	3.5	68.0
November	81.4	3.0	84.4	3.6	67.9
December	81.0	3.1	84.1	3.7	67.6
2001					
January	80.6	3.2	83.9	3.9	67.4
February	80.3	3.4	83.7	4.1	67.3
March	80.1	3.6	83.6	4.3	67.2
April	79.8	3.7	83.5	4.4	67.0
May	79.7	3.7	83.4	4.4	66.8
June	79.5	3.6	83.1	4.4	66.6
July	79.3	3.5	82.8	4.2	66.3
August	79.2	3.3	82.6	4.0	66.0

For footnote see end of table.

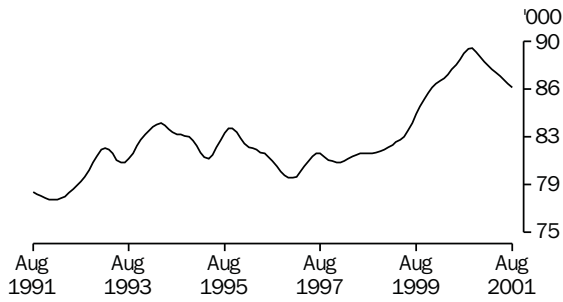
...continued

<i>Month</i>	<i>Employed</i> '000	<i>Unemployed</i> '000	<i>Labour force</i> '000	<i>Unemployment rate</i> %	<i>Participation rate</i> %
PERSONS					
May					
1997	154.4	12.7	167.1	7.6	71.9
1998	156.1	10.8	166.9	6.5	71.2
1999	162.0	9.3	171.3	5.4	72.2
2000					
June	167.8	8.3	176.1	4.7	72.7
July	168.9	8.0	177.0	4.5	72.9
August	170.1	7.8	177.9	4.4	73.2
September	170.9	7.6	178.5	4.3	73.4
October	171.0	7.6	178.6	4.3	73.4
November	170.6	7.7	178.3	4.3	73.3
December	169.8	7.9	177.7	4.4	73.0
2001					
January	169.1	8.0	177.1	4.5	72.8
February	168.4	8.4	176.8	4.7	72.6
March	167.8	8.9	176.7	5.0	72.6
April	167.3	9.4	176.7	5.3	72.5
May	166.9	9.8	176.7	5.5	72.4
June	166.6	9.8	176.4	5.6	72.2
July	166.4	9.7	176.1	5.5	72.0
August	166.3	9.4	175.7	5.3	71.8

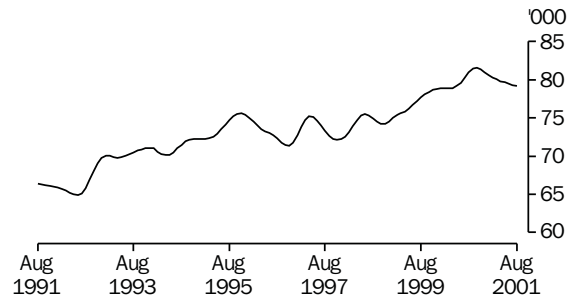
(a) See Explanatory Notes paragraph 29 and 30.

TREND SERIES, ACT(a)

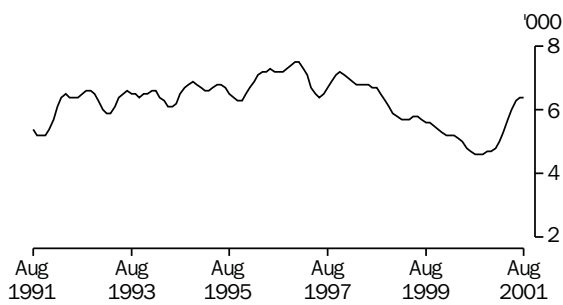
EMPLOYED MALES



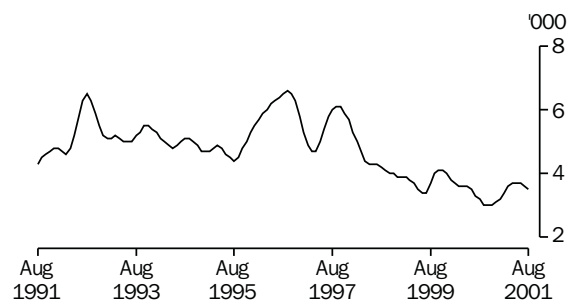
EMPLOYED FEMALES



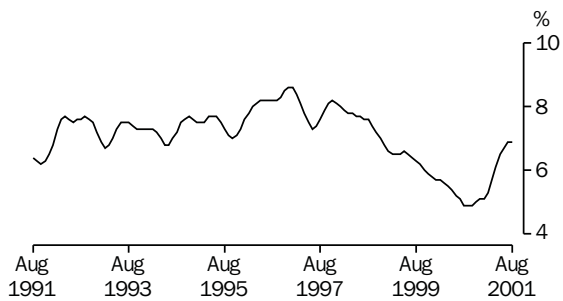
UNEMPLOYED MALES



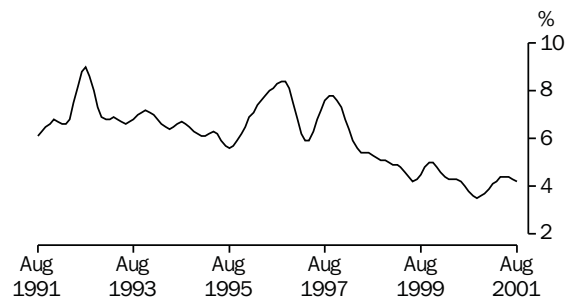
UNEMPLOYED FEMALES



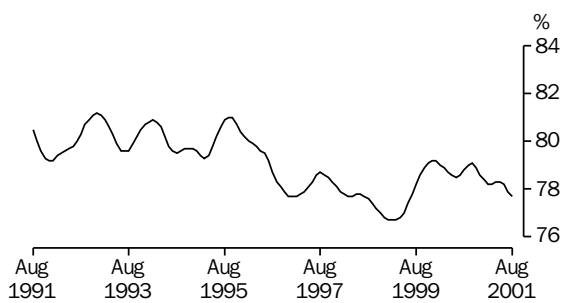
MALE UNEMPLOYMENT RATE



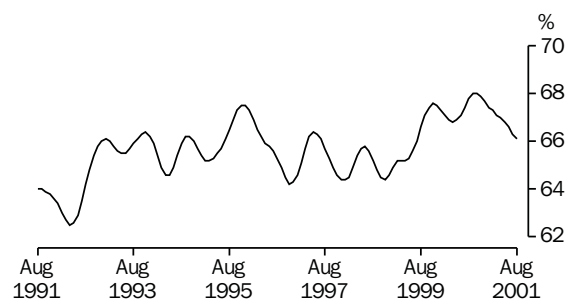
FEMALE UNEMPLOYMENT RATE



MALE PARTICIPATION RATE



FEMALE PARTICIPATION RATE



(a) Comparisons between these graphs should not be made, as their vertical axes are not similarly scaled.

	Persons					
	Males	Married	Females			Total
			Age group (years)		Total	
			20-24	25 and over		
	'000	'000	'000	'000	'000	'000
Employed						
Full-time workers	72.7	27.4	48.5	14.5	103.2	121.2
Part-time workers	14.3	18.6	30.5	6.3	29.0	44.8
Total	87.0	45.9	79.0	20.8	132.2	165.9
Unemployed						
Looking for full-time work	4.5	*0.5	1.6	1.4	3.7	6.0
Looking for part-time work	*0.9	*0.1	*1.0	*0.6	*0.5	1.9
Total	5.4	*0.6	2.6	2.0	4.2	7.9
Labour force	92.3	46.5	81.5	22.8	136.4	173.9
Not in labour force	27.3	23.5	43.6	4.3	57.4	70.9
Aged 15-19 attending school	3.3	*0.0	4.2	7.5
Civilian population	119.6	70.0	125.1	27.1	193.8	244.7
	%	%	%	%	%	%
Unemployment rate						
Unemployment rate	5.8	*1.3	3.2	8.9	3.1	4.6
Looking for full-time work	5.8	*1.8	3.1	9.0	47.2	4.8
Participation rate	77.2	66.4	65.2	84.2	70.4	71.0
Employment/population ratio	72.7	65.6	63.1	76.7	68.2	67.8
	no.	no.	no.	no.	no.	no.
Average weekly hours worked by employed persons	37.4	30.4	30.0	32.2	35.6	33.9
Average duration of unemployment (weeks)	61.1	*20.2	14.3	44.2	59.7	46.2

23

LABOUR FORCE STATUS(a), BIRTHPLACE AND YEAR OF ARRIVAL, ACT, AUGUST 2001

<i>Birthplace and year of arrival</i>	Employed	Unemployed	Not in labour force	Labour force	Civilian population
					aged 15 and over
	'000	'000	'000	'000	'000
Born in Australia	128.6	6.2	43.7	134.8	178.6
Born outside Australia					
Arrived before 1976	19.6	*0.4	15.4	20.0	35.4
Arrived 1976-1980	3.9	*0.0	*0.4	3.9	4.4
Arrived 1981-1985	4.1	*0.3	2.6	4.4	7.0
Arrived 1986-1990	4.6	*0.3	2.2	4.9	7.1
Arrived 1991-1995	2.4	*0.1	*0.6	2.5	3.1
Arrived 1996 to survey date	2.7	*0.6	2.8	3.3	6.1
Total	37.3	1.7	24.1	39.0	63.1
Main English speaking countries					
Arrived before 1976	10.0	*0.1	6.0	10.1	16.1
Arrived 1976-1980	1.5	*0.0	0.0	1.5	1.5
Arrived 1981-1985	1.3	*0.1	0.8	1.4	2.2
Arrived 1986-1990	1.4	*0.1	0.5	1.5	2.1
Arrived 1991-1995	*0.6	*0.0	*0.0	*0.6	*0.6
Arrived 1996 to survey date	*0.3	*0.0	*0.4	*0.3	*0.7
Total	15.1	*0.3	7.7	15.4	23.1
Other than Main English speaking countries					
Arrived before 1976	9.6	*0.3	9.4	10.0	19.3
Arrived 1976-1980	2.4	*0.0	0.4	2.4	2.8
Arrived 1981-1985	2.8	*0.2	1.8	3.0	4.8
Arrived 1986-1990	3.1	*0.2	1.6	3.3	5.0
Arrived 1991-1995	1.8	*0.1	*0.6	1.9	2.6
Arrived 1996 to survey date	2.4	*0.6	2.4	3.0	5.4
Total	22.2	1.4	16.3	23.6	39.9
Total	165.9	7.9	67.8	173.9	241.7

Excludes institutionalized persons.

24

EMPLOYED PERSONS(a), INDUSTRY, ACT

Industry division	Males		Females		Persons	
	August 2000	August 2001	August 2000	August 2001	August 2000	August 2001
	'000	'000	'000	'000	'000	'000
Industry						
Agriculture, forestry and fishing	*0.3	*0.8	*0.3	*0.3	*0.6	*1.1
Mining	*0.0	*0.0	*0.0	*0.0	*0.0	*0.0
Manufacturing	3.8	3.8	1.8	2.4	5.6	6.2
Electricity, gas and water supply	*0.7	*0.4	*0.2	*0.4	*0.9	*0.7
Construction	11.2	7.4	1.8	0.9	12.9	8.3
Wholesale trade	3.2	3.0	*0.8	1.2	4.0	4.3
Retail trade	11.3	11.1	11.2	9.7	22.5	20.8
Accommodation, cafes and restaurants	4.2	2.8	3.4	3.1	7.6	5.9
Transport and storage	3.5	3.0	1.6	*1.0	5.1	3.9
Communication services	*1.0	1.5	1.3	*0.4	2.2	1.9
Finance and insurance	1.6	1.8	2.4	2.2	3.9	3.9
Property and business services	15.5	15.4	10.0	11.8	25.5	27.2
Government administration and defence	17.8	19.6	17.8	16.9	35.6	36.5
Education	5.2	4.6	11.5	8.2	16.8	12.8
Health and community services	3.7	3.2	12.8	13.3	16.5	16.5
Cultural and recreational services	3.7	3.6	2.6	3.2	6.3	6.8
Personal and other services	2.8	4.9	2.9	4.1	5.7	9.0
Total employed	89.5	87.0	82.3	79.0	171.8	165.9

(a) A change in the definition of employed persons has caused an estimated increase of 100 employed people in ACT from March 2001 to April 2001.

25

EMPLOYED PERSONS(a), OCCUPATION, ACT

Major occupation group	August 2000			August 2001		
	Males	Females	Persons	Males	Females	Persons
	'000	'000	'000	'000	'000	'000
Occupation						
Managers and administrators	9.7	5.6	15.3	9.1	5.0	14.1
Professionals	25.4	20.6	45.9	25.2	21.1	46.3
Associate professionals	12.5	9.7	22.2	12.8	9.1	22.0
Tradespersons and related workers	16.3	1.2	17.6	13.0	1.6	14.5
Advanced clerical and service workers	*0.4	6.8	7.2	*0.8	5.9	6.7
Intermediate clerical, sales and service workers	9.9	24.7	34.7	8.6	21.6	30.1
Intermediate production and transport workers	4.8	*0.8	5.6	7.5	*0.9	8.4
Elementary clerical, sales and service workers	6.5	10.7	17.2	5.8	11.3	17.1
Labourers and related workers	3.9	2.2	6.1	4.2	2.5	6.8
Total employed	89.5	82.3	171.8	87.0	79.0	165.9

(a) A change in the definition of employed persons has caused an estimated increase of 100 employed people in ACT from March 2001 to April 2001.

Month	Long-term unemployment									Long-term unemployment as a proportion of total unemployment		
	52 weeks and under 104			104 weeks and over			Total			Males	Females	Persons
	Males	Females	Persons	Males	Females	Persons	Males	Females	Persons	%	%	%
	'000	'000	'000	'000	'000	'000	'000	'000	'000	%	%	%
2001												
June	*0.2	*0.1	*0.3	*1.1	*0.2	1.3	1.3	*0.3	1.6	20.6	8.6	29.6
July	*0.4	*0.0	*0.4	*0.9	*0.3	1.2	1.3	*0.3	1.6	20.6	8.3	61.5
August	*0.5	*0.2	*0.7	*0.9	*0.0	*0.9	1.5	*0.2	1.6	27.8	7.7	20.3

EXPLANATORY NOTES

- INTRODUCTION** **1** This publication contains estimates of the labour force derived from the Labour Force Survey (LFS) component of the monthly population survey, which is conducted on a sample basis throughout Australia.
- THE POPULATION SURVEY** **2** This survey consists of the LFS and, in most months, one or more supplementary topics. The survey is based on a multi-stage area sample of private dwellings (houses, flats, etc.) and non-private dwellings (hotels, motels, etc.) and covers 1 in 300 of the population of NSW. The information is obtained from the occupants of selected dwellings by specially trained interviewers. The interviews are generally conducted during the two weeks beginning on the Monday between the 6th and 12th of each month. The information obtained relates to the week before the interview (i.e. the reference week).
- TELEPHONE INTERVIEWING** **3** The ABS has introduced the use of telephone interviewing into the LFS. Households selected for the LFS are interviewed each month for eight months, with one-eighth of the sample being replaced each month. The first interview is conducted face-to-face with subsequent interviews conducted by telephone (if acceptable to the respondent). Telephone interviewing was phased in from August 1996 to February 1997.
- SCOPE** **4** The LFS includes all persons aged 15 years and over, except:
- members of the permanent defence forces;
 - certain diplomatic personnel of overseas governments, customarily excluded from census and estimated populations;
 - overseas residents in Australia; and
 - members of non-Australian defence forces (and their dependants) stationed in Australia.
- SURVEY SAMPLE REDESIGN** **5** The LFS sample was reselected using information collected in the 1996 Census of Population and Housing. The new sample was phased in over the eight-month period from September 1997 to April 1998.
- 6** For further details, see *Information Paper: Labour Force Survey Sample Design* (Cat. no. 6269.0).
- POPULATION BENCHMARKS** **7** LFS estimates are calculated in such a way as to add up to independent estimates of the civilian population aged 15 years and over (population benchmarks). From February 1999, labour force estimates have been compiled using benchmarks based on the results of the 1996 Census of Population and Housing. Small revisions were made to many of the historical estimates from January 1995 to January 1999.

DEFINITIONS

8 The labour force category to which a person is assigned depends on the actual activity undertaken during the reference week (i.e. whether working, looking for work, etc.). The following definitions, which conform closely to the international standard definitions specified by the International Labour Office (ILO), relate only to those persons within the scope of the survey.

9 *Employed persons* comprise civilians aged 15 years and over who, during the reference week:

- worked for one hour or more for pay, profit, commission or payment in kind (including employees, employers and own account workers) in a job or business, or on a farm; or
- worked for one hour or more without pay in a family business or on a farm (i.e. contributing family workers); or
- were employees who had a job but were not at work and were: on paid leave; on leave without pay for less than four weeks up to the end of the reference week; stood down without pay because of bad weather or plant breakdown at their place of employment for less than four weeks up to the end of the reference week; on strike or locked out; on workers' compensation and expected to be returning to their job; or receiving wages or salary while undertaking full-time study; or
- were employers, own account workers or contributing family workers who had a job, business or farm, but were not at work.

10 Prior to April 1986, contributing family workers who worked for 1–14 hours were excluded from the category of employed persons.

11 Employed persons can be classified into:

- *full-time workers*, i.e. those who usually worked 35 hours or more a week (in all jobs) and those who, although usually part-time workers, worked 35 hours or more during the reference week; and
- *part-time workers*, i.e. those who usually worked less than 35 hours a week and who did so during the reference week.

12 *Unemployed persons* are those aged 15 years and over who were not employed during the reference week, and:

- had actively looked for full-time or part-time work at any time in the four weeks up to the end of the reference week, and:
- were available for work in the reference week, or would have been available except for temporary illness (i.e. lasting for less than four weeks to the end of the reference week); or
- were waiting to start a new job within four weeks from the end of the reference week and would have started in the reference week if the job had been available then; or

- were waiting to be called back to a full-time or part-time job from which they had been stood down without pay for less than four weeks up to the end of the reference week (including the whole of the reference week) for reasons other than bad weather or plant breakdown.

13 *Actively looking for work* includes writing, telephoning or applying in person to an employer for work; answering an advertisement for a job; checking factory notice-boards or the touchscreens at the Centrelink offices; being registered with Centrelink as a jobseeker; checking or registering with any other employment agency; advertising or tendering for work; and contacting friends or relatives.

14 *The unemployment rate* for any group is the number of unemployed persons expressed as a percentage of the labour force in the same group.

15 *The labour force* comprises persons who were employed or unemployed as defined above.

16 *Long-term unemployed* comprises persons unemployed for a period of 52 weeks or more.

17 *Persons not in the labour force* are those who, during the reference week, were not in the categories employed or unemployed as defined above.

18 *The participation rate* for any group is the labour force expressed as a percentage of the civilian population aged 15 years and over in the same group.

19 *Duration of unemployment* is the period from the time the person began looking for work or was stood down to the end of the reference week.

20 *Unemployed persons classified by industry and occupation.* Unemployed persons who had worked full-time for two weeks or more in the last two years are classified according to the industry and occupation of their most recent full-time job.

21 *Industry classification.* From August 1994, LFS industry data have been classified according to the *Australian and New Zealand Standard Industrial Classification (ANZSIC), 1993* (Cat. no. 1292.0).

22 *Occupation classification.* From August 1996, occupation data have been classified according to the *Australian Standard Classification of Occupations (ASCO), Second Edition* (Cat. no. 1220.0).

23 *Marital status.* In the LFS, persons are classified as married or not married. Persons are classified as married if they are reported as being married (including de facto) and their spouse was a usual resident of the household at the time of the survey.

DEFINITIONS *continued*

24 *Persons attending school or a tertiary educational institution.*

Persons attending school comprise those aged 15–19 years who, during the reference week, were enrolled full-time at secondary or high schools. Persons attending a tertiary educational institution comprise those aged 15–24 years who were enrolled full-time at universities, other institutions of higher education, TAFE colleges and theological colleges.

25 *Employment/population ratio.* For any group, the number of employed persons expressed as a percentage of the civilian population aged 15 years and over in the same group.

STATISTICAL AREAS

26 The regional structure for NSW used in tables 16–19 is based on the Statistical Region structure of the *Australian Standard Geographical Classification (ASGC)* (Cat. no. 1216.0).

27 Changes were made to labour force regions in NSW from September 1997. Blacktown–Baulkham Hills SR was split up with Blacktown being merged with Outer Western Sydney SR to form Outer Western Sydney SR and Blacktown (C) and Baulkham Hills being merged with Hornsby–Ku-ring-gai SR to form Hornsby–Ku-ring-gai SR and Baulkham Hills (A). In addition, Northern, Far West–North Western and Central West SRs now include the Far West Statistical Division, previously excluded. This has resulted in a series break in the data for this area.

28 For further details, see *Information Paper: Regional Labour Force Statistics, September 1997* (Cat. no. 6262.0).

SEASONAL ADJUSTMENT
AND TREND ESTIMATION

29 Seasonal adjustment is a means of removing the estimated effects of normal seasonal variation from the series so that the effects of other influences on the series can be more clearly recognised.

30 Smoothing seasonally adjusted series produces a measure of the underlying trend by reducing the impact of the irregular component of the series. The trend estimates are derived by applying a 13-term Henderson-weighted moving average to the respective seasonally adjusted series. While this smoothing technique enables estimates to be produced which include the latest month, it does result in revisions to the most recent months as additional observations become available.

31 Seasonally adjusted series for NSW appear in table 2. Trend estimates for NSW and ACT appear in tables 2 and 21 respectively. Seasonally adjusted data is not available for the ACT.

RELIABILITY OF THE
ESTIMATES

32 Estimates are subject to sampling and non-sampling errors. See the Technical note on pages 58–60 for more information.

RELATED PUBLICATIONS

33 Users may also wish to refer to the following related publications which are available from ABS Bookshops:

- *Australian Capital Territory at a Glance*, (Cat. no. 1314.8), issued annually.
- *Australian Capital Territory Business Indicators*, (Cat. no. 1303.8), issued monthly.
- *Australian Capital Territory Statistical Summary*, (Cat. no. 1307.8), issued annually.
- *Information Paper: Labour Force Survey — Sample Design*, (Cat. no. 6269.0).
- *Information Paper: Regional Labour Force Statistics, September 1997*, (Cat. no. 6262.0).
- *Labour Force, Australia, Preliminary*, (Cat. no. 6202.0), issued monthly.
- *Labour Force, Australia*, (Cat. no. 6203.0), issued monthly.

ADDITIONAL DATA

34 The ABS can also make available information which is not published. In general, a charge is made for providing unpublished information.

ROUNDING

35 Figures have been rounded and discrepancies may occur between sums of the component items and the totals shown.

APPENDIX

SUPPLEMENTARY TOPICS

Although emphasis in the population survey is placed on the regular collection of data on demographic and labour force characteristics, supplementary and special surveys of particular aspects of the labour force are carried out from time to time. The data are available in publication form, by subscription or on request.

CATALOGUE/ PRODUCT NO.	TITLE OF PUBLICATION/STANDARD DATA SERVICE	PRICE(a) \$
6206.0	Labour Force Experience, Australia, February 2001	19.50
6209.0	Labour Mobility, February 2000	21.00
6220.0	Persons not in the Labour Force, Australia, September 2000	21.00
6222.0	Job Search Experience of Unemployed Persons, Australia, July 2000	21.00
6224.0	Labour Force Status and Other Characteristics of Families, Australia, June 2000	20.00
6227.0	Transition from Education to Work, Australia, May 2000	21.00
6245.0	Successful and Unsuccessful Job Search Experience, Australia, July 2000	21.00
6247.1	Part-time, Casual and Temporary Employment, NSW, October 1997	16.00
6250.0	Labour Force Status and Other Characteristics of Migrants, Australia, November 1999	19.50
6254.0	Career Experience, Australia, November 1998	19.00
6260.0	Labour Force Projections, Australia, 1999–2016	18.50
6265.0	Underemployed Workers, Australia, September 2000	21.00
6272.0	Participation in Education, Australia, September 1999	18.50
6275.0	Locations of Work, Australia, June 2000	20.00
6281.0	Work in Selected Culture/Leisure Activities, Australia. 1998–99	18.50
6310.0	Employee Earnings, Benefits and Trade Union Membership, Australia, August 2000	24.00
6342.0	Working Arrangements, Australia, August 1997	19.00
6359.0	Forms of Employment, Australia, August 1998	20.00

(a) Prices quoted are subject to revision.

MAJOR STATISTICAL REGION	STATISTICAL REGION/ STATISTICAL REGION SECTOR	STATISTICAL LOCAL AREA
SYDNEY	Inner Sydney and Inner Western Sydney (SRs)	Ashfield (A) Botany Bay (C) Burwood (A) Concord (A) Drummoyne (A) Leichhardt (A) Marrickville (A) South Sydney (C) Strathfield (A) Sydney (C) — Inner Sydney (C) — Remainder
	Inner Sydney (SR)	Botany Bay (C) Leichhardt (A) Marrickville (A) South Sydney (C) Sydney (C) — Inner Sydney (C) — Remainder
	Eastern Suburbs (SR)	Randwick (C) Waverley (A) Woollahra (A)
	St George–Sutherland (SR)	Hurstville (C) Kogarah (A) Rockdale (C) Sutherland Shire (A)
	Canterbury–Bankstown (SR)	Bankstown (C) Canterbury (C)
	Fairfield–Liverpool and Outer South Western Sydney (SRs)	Camden (A) Campbelltown (C) Fairfield (C) Liverpool (C) Wollondilly (A)
	Fairfield–Liverpool (SR)	Fairfield (C) Liverpool (C)
	Central Western Sydney (SR)	Auburn (A) Holroyd (C) Parramatta (C)
	Outer Western Sydney (SR) and Blacktown (C)	Blacktown (C) Blue Mountains (C) Hawkesbury (C) Penrith (C)

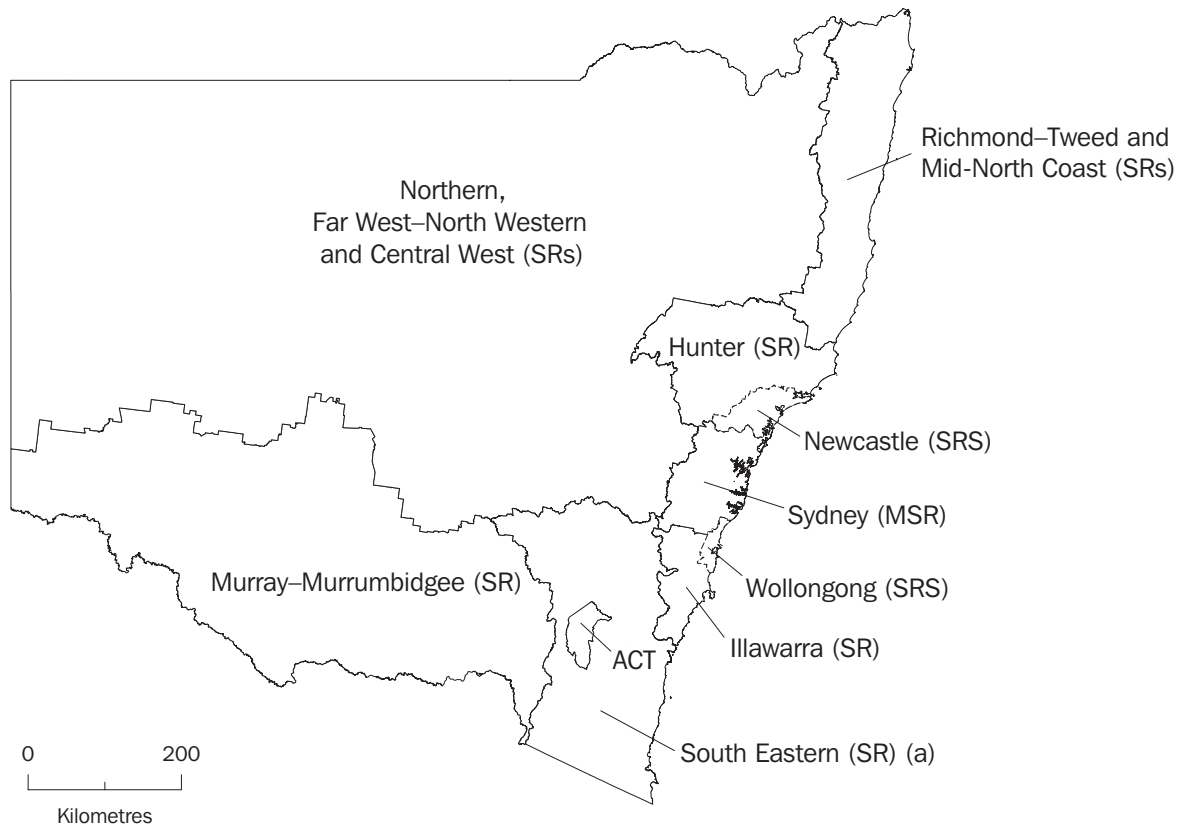
MAJOR STATISTICAL REGION	STATISTICAL REGION/ STATISTICAL REGION SECTOR	STATISTICAL LOCAL AREA
SYDNEY <i>continued</i>	Lower Northern Sydney (SR)	Hunter's Hill (A) Lane Cove (A) Mosman (A) North Sydney (A) Ryde (C) Willoughby (C)
	Hornsby–Ku-ring-gai (SR) and Baulkham Hills (A)	Baulkham Hills (A) Hornsby (A) Ku-ring-gai (A)
	Northern Beaches (SR)	Manly (A) Pittwater (A) Warringah (A)
	Gosford–Wyong (SR)	Gosford (C) Wyong (A)
BALANCE OF NSW	Hunter (SR)	Cessnock (C) Dungog (A) Gloucester (A) Great Lakes (A) Lake Macquarie (C) Maitland (C) Merriwa (A) Murrurundi (A) Muswellbrook (A) Newcastle (C) — Inner Newcastle (C) — Remainder Port Stephens (A) Scone (A) Singleton (A)
	Newcastle (SRS)	Cessnock (C) Lake Macquarie (C) Maitland (C) Newcastle (C) — Inner Newcastle (C) — Remainder Port Stephens (A)

MAJOR STATISTICAL REGION	STATISTICAL REGION/ STATISTICAL REGION SECTOR	STATISTICAL LOCAL AREA
BALANCE OF NSW <i>continued</i>	Illawarra and South Eastern (SRs)	Bega Valley (A) Bombala (A) Boorowa (A) Cooma–Monaro (A) Crookwell (A) Eurobodalla (A) Goulburn (C) Gunning (A) Harden (A) Kiama (A) Mulwaree (A) Queanbeyan (C) Shellharbour (A) Shoalhaven (C) Snowy River (A) Tallaganda (A) Wingecarribee (A) Wollongong (C) Yarrowlumla (A) — Part A Yarrowlumla (A) — Part B Yass (A) Young (A)
	Illawarra (SR)	Kiama (A) Shellharbour (A) Shoalhaven (C) Wingecarribee (A) Wollongong (C)
	Richmond–Tweed and Mid-North Coast (SRs)	Ballina (A) Bellingen (A) Byron (A) Coffs Harbour (C) Copmanhurst (A) Grafton (C) Greater Taree (C) Hastings (A) Kempsey (A) Kyogle (A) Lismore (C) Lord Howe Island Macleay (A) Nambucca (A) Pristine Waters (A) — Nymboida Pristine Waters (A) — Ulmarra Richmond Valley (A) — Casino Richmond Valley (A) — Bal Tweed (A) — Part A Tweed (A) — Part B

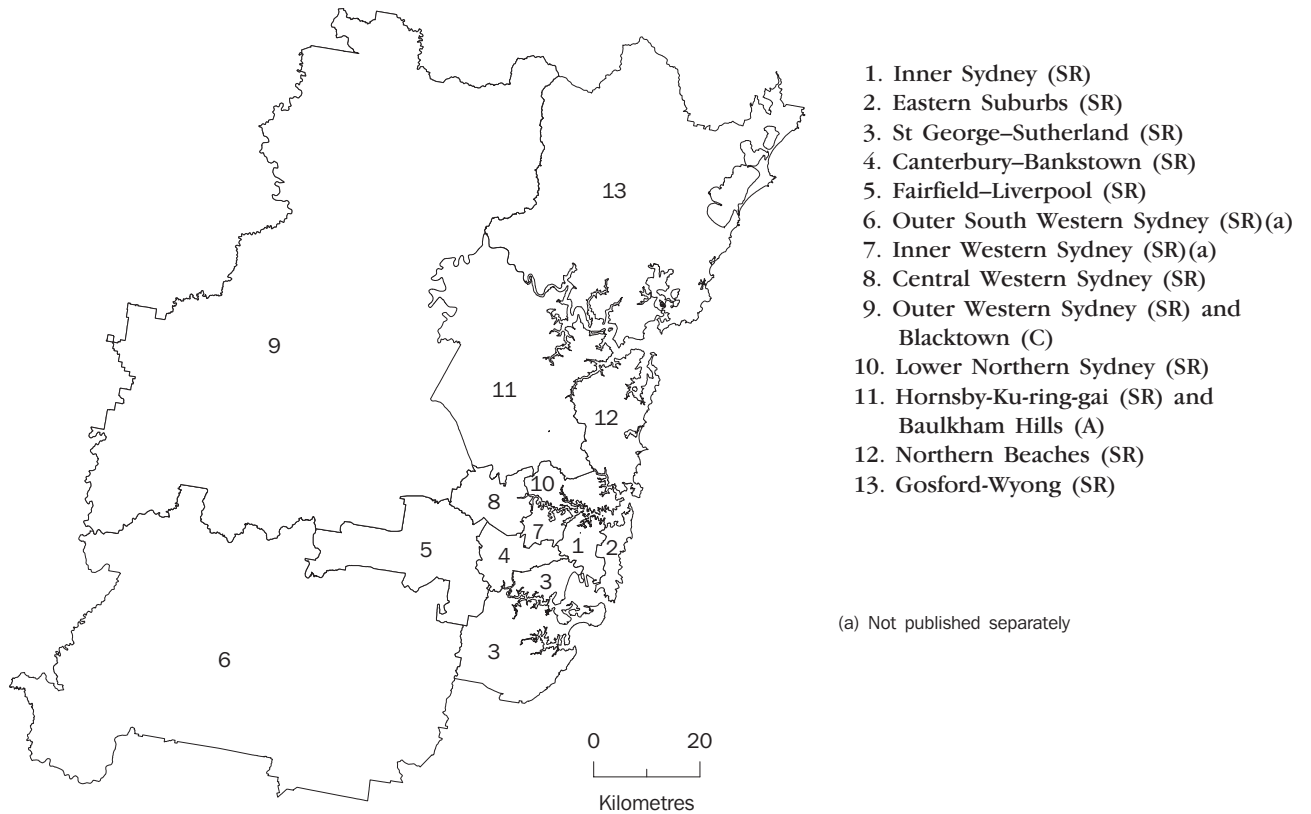
MAJOR STATISTICAL REGION	STATISTICAL REGION/ STATISTICAL REGION SECTOR	STATISTICAL LOCAL AREA
BALANCE OF NSW <i>continued</i>	Northern, Far West — North Western and Central West (SRs)	Armidale Dumeresq (A) — City Armidale Dumeresq (A) — Bal Barraba (A) Bathurst (C) Bingara (A) Bland (A) Blayney (A) — Part A Blayney (A) — Part B Bogan (A) Bourke (A) Brewarrina (A) Broken Hill (C) Central Darling (A) Cabonne (A) — Part A Cabonne (A) — Part B Cabonne (A) — Part C Cobar (A) Coolah (A) Coonabarabran (A) Coonamble (A) Cowra (A) Dubbo (C) Evans (A) — Part A Evans (A) — Part B Forbes (A) Gilgandra (A) Glen Innes (A) Greater Lithgow (C) Gunnedah (A) Guyra (A) Inverell (A) — Part A Inverell (A) — Part B Lachlan (A) Manilla (A) Moree Plains (A) Mudgee (A) Narrabri (A) Narromine (A) Nundle (A) Oberon (A) Orange (C) Parkes (A) Parry (A) Quirindi (A) Rylstone (A) Severn (A) Tamworth (C) Tenterfield (A) Unincorporated Far West Uralla (A) Walcha (A) Walgett (A) Warren (A) Weddin (A) Wellington (A) Yallaroi (A)

MAJOR STATISTICAL REGION	STATISTICAL REGION/ STATISTICAL REGION SECTOR	STATISTICAL LOCAL AREA
BALANCE OF NSW <i>continued</i>	Murray–Murrumbidgee (SR)	Albury (C) Balranald (A) Berrigan (A) Carrathool (A) Conargo (A) Coolamon (A) Cootamundra (A) Corowa (A) Culcairn (A) Deniliquin (A) Griffith (C) Gundagai (A) Hay (A) Holbrook (A) Hume (A) Jerilderie (A) Junee (A) Leeton (A) Lockhart (A) Murray (A) Murrumbidgee (A) Narrandera (A) Temora (A) Tumbarumba (A) Tumut (A) Urana (A) Wagga Wagga (C) Wakool (A) Wentworth (A) Windouran (A)
NOT APPLICABLE	Australian Capital Territory and South Eastern (SRs)	Australian Capital Territory Bega Valley (A) Bombala (A) Boorowa (A) Cooma–Monaro (A) Crookwell (A) Eurobodalla (A) Goulburn (C) Gunning (A) Harden (A) Mulwaree (A) Queanbeyan (C) Snowy River (A) Tallaganda (A) Yarrowlumla (A) — Part A Yarrowlumla (A) — Part B Yass (A) Young (A)

REGIONS OF NSW AND ACT



REGIONS OF SYDNEY (MSR)



TECHNICAL NOTE: DATA RELIABILITY

SOURCES OF ERROR

There are a number of possible sources of error in sample surveys and these can be classified into two types: sampling error; and non-sampling error.

NON-SAMPLING ERRORS

Non-sampling errors may arise as a result of errors in the reporting, recording or processing of the data and can occur even if there is a complete enumeration of the population. Non-sampling errors can be introduced through: inadequacies in the questionnaire; non-response; inaccurate reporting by respondents; errors in the application of survey procedures; incorrect recording of answers; and errors in data entry and processing.

It is difficult to measure the size of the non-sampling errors and the extent of these errors could vary considerably in significance from survey to survey, and from question to question. However, every effort is made in the design of the survey and development of survey procedures to minimise the effect of these errors.

SAMPLING ERRORS

Sampling error is the error which occurs by chance because the data were only obtained from a sample, not the entire population.

Standard errors of estimates

One measure of the variability of estimates which occurs as a result of surveying only a sample of the population is the standard error (SE). There are about two chances in three that a survey estimate is within one standard error of the figure that would have been obtained if all persons had been included and about 19 chances in 20 that it is within two standard errors. That is, there are 19 chances in 20 that the true estimate is in the range:

$$X - 2 \times SE(X) \text{ to } X + 2 \times SE(X)$$

(where X is the estimate)

The standard error of an estimate can be obtained from the tables on pages 61–63. Linear interpolation should be used to calculate the standard error of estimates falling between the sizes of estimates listed in the table (see example on page 60).

In the tables in this publication, only estimates with relative standard errors of 25% or less, and percentages based on such estimates, are considered sufficiently reliable for most purposes. However, estimates and percentages with larger relative standard errors have been included and are preceded by an asterisk (e.g. *3.4) to indicate they are subject to high standard errors and should be used with caution.

Standard errors of estimates *continued* The standard error can also be expressed as a percentage of the estimate and this is known as the relative standard error (RSE). The RSE is determined by dividing the standard error of an estimate SE(X) by the estimate X and expressing it as a percentage. That is:

$$RSE(X) = \frac{SE(X) \times 100}{X}$$

(where X is the estimate)

The look up list on the following page provides a guide for the calculation of standard errors and relative standard errors for a range of statistics.

CALCULATING STANDARD ERRORS

The methods described below refer to the calculation of standard errors for NSW estimates. Standard errors of ACT estimates should be calculated from the table on page 63.

MEASURE OF RELIABILITY TO BE DETERMINED	METHOD
Standard errors of estimates of employed persons.	Determine the SE from the table on page 61 directly.
Standard errors of estimates of unemployed persons.	Multiply the SE from the table on page 61 by 1.06.
Standard errors of estimates of persons not in the labour force.	Multiply the SE from the table on page 61 by 1.1.
Standard errors of rates (e.g. the unemployment rate which is based on the number of unemployed persons expressed as a percentage of the number of persons in the labour force).	Determine the RSE of the numerator (X) and the denominator (Y) then apply the following formula: $RSE \left(\frac{X}{Y} \right) = \sqrt{[RSE(X)]^2 - [RSE(Y)]^2}$
Standard error of average duration of unemployment.	Determine the RSE for the number of persons on which the average is based and multiply this by 1.3.
Standard error of median duration of unemployment.	Determine the RSE for the number of persons on which the average is based and multiply this by 2.0.
Standard error of monthly movements.	From the table on page 62, look up the SE of the larger estimate.
Standard error of quarterly movements.	Determine the standard error of the larger estimate from the table on page 61 and multiply this by 1.11.
Standard error of annual movements.	Determine the standard error of the larger estimate from the table on page 61 and multiply this by 1.3.

LINEAR INTERPOLATION

Linear interpolation is used to determine the standard error of an estimate which falls between two values listed in the size of estimate column in the tables on page 61 or 63. Linear interpolation is best described using an example. In August 2001 there were 818,400 (X_e) employed persons working part-time in NSW. This estimate falls between the values 500,000 (X_l) and 1,000,000 (X_u) in the table on page 61.

The standard error of the estimate is determined as follows. Firstly calculate

$$\begin{aligned} F &= \frac{X_e - X_l}{X_u - X_l} \\ &= \frac{818,400 - 500,000}{1,000,000 - 500,000} \\ &= 0.64 \end{aligned}$$

Secondly, calculate the standard error of the estimate, $SE(X_e)$ thus:

$$\begin{aligned} SE(X_e) &= SE(X_l) + (F \times [SE(X_u) - SE(X_l)]) \\ &= 8,350 + (0.64 \times [11,650 - 8,350]) \\ &= 10,462 \end{aligned}$$

Therefore the standard error of the number of employed persons working part-time in NSW in August 2001 is 10,462.

STANDARD ERRORS LEVEL OF ESTIMATES(a), NSW

REGIONS IN SYDNEY (MSR)

Size of estimate	NSW	Sydney (MSR)	Balance of NSW (MSR)	Inner Sydney and Inner Western Sydney (SRs)		Eastern Suburbs (SR)	St George-Sutherland	Canterbury-Bankstown (SR)	Fairfield-Liverpool and Outer South Western Sydney (SRs)	
				Inner Sydney (SR)	Western Sydney (SRs)				Outer South Western Sydney (SRs)	Fairfield-Liverpool (SR)
500	320	440	400	310	290	240	200	260	310	300
1 000	520	630	640	460	440	360	310	390	460	450
3 000	1 000	1 060	1 060	880	830	680	590	740	880	850
5 000	1 350	1 340	1 340	1 180	1 110	910	790	990	1 180	1 140
10 000	1 900	1 820	1 810	1 740	1 630	1 340	1 160	1 460	1 730	1 680
20 000	2 600	2 440	2 420	2 540	2 380	1 960	1 700	2 130	2 530	2 450
50 000	3 700	3 500	3 520	4 130	3 880	3 190	2 760	3 470	4 120	3 990
100 000	4 600	4 500	4 600	5 900	5 600	4 600	4 000	5 000	5 900	5 700
200 000	5 750	5 800	6 000	8 400	7 900	6 500	5 600	7 100	8 400	8 100
300 000	6 700	6 700	6 900	10 300	9 600	7 900	6 900	8 600	10 200	9 900
500 000	8 350	7 900	8 300	13 200	12 400	10 200	8 800	11 100	13 100	12 700
1 000 000	11 650	9 800	10 600	—	—	—	—	—	—	—
2 000 000	17 150	12 000	13 300	—	—	—	—	—	—	—
5 000 000	30 750	15 300	17 700	—	—	—	—	—	—	—

REGIONS IN SYDNEY (MSR)—continued

Size of estimates	Central Western Sydney (SR)		Outer Western Sydney (SR) and Blacktown (C)		Lower Northern Sydney (SR)	Hornsby-Ku-ring-gai (SR) and Baulkham Hills (A)		Northern Beaches	Gosford Wyong (SR)
	500	230	230	260	260	270	260	260	260
1 000	340	340	400	400	410	390	400	400	350
3 000	650	650	760	760	770	750	760	760	670
5 000	870	870	1 010	1 010	1 030	1 000	1 010	1 010	890
10 000	1 290	1 290	1 490	1 490	1 520	1 480	1 490	1 490	1 310
20 000	1 880	1 880	2 180	2 180	2 220	2 150	2 170	2 170	1 920
50 000	3 060	3 060	3 550	3 550	3 620	3 510	3 540	3 540	3 120
100 000	4 400	4 400	5 100	5 100	5 200	5 000	5 100	5 100	4 500
200 000	6 200	6 200	7 200	7 200	7 300	7 100	7 200	7 200	6 400
300 000	7 600	7 600	8 800	8 800	9 000	8 700	8 800	8 800	7 800

REGIONS IN BALANCE OF NSW (MSR)

Size of estimates	Hunter (SR)	Newcastle (SRS)	Illawarra and South Eastern (SRS)		Illawarra (SR)	Wollongong (SRS)	Richmond-Tweed and Mid North Western and Central West (SRs)		Murray-Murrumbidgee (SR)
			Illawarra and South Eastern (SRS)	Illawarra (SR)			Richmond-Tweed and Mid North Western and Central West (SRs)	Richmond-Tweed and Mid North Western and Central West (SRs)	
500	300	280	310	290	240	340	330	340	
1 000	450	420	470	440	360	510	500	520	
3 000	850	810	900	830	680	970	940	990	
5 000	1 140	1 080	1 200	1 110	910	1 300	1 260	1 320	
10 000	1 680	1 590	1 770	1 630	1 340	1 920	1 860	1 950	
20 000	2 450	2 320	2 580	2 390	1 950	2 800	2 720	2 850	
50 000	4 000	3 780	4 210	3 890	3 180	4 560	4 430	4 640	
100 000	5 700	5 400	6 000	5 600	4 600	6 500	6 300	6 600	
200 000	8 100	7 700	8 600	7 900	6 500	9 300	9 000	9 400	
300 000	9 900	9 400	10 500	9 700	7 900	11 300	11 000	11 500	

(a) Standard errors of estimates from September 1997. For standard errors for earlier periods, see previous issues of this publication.

STANDARD ERRORS MOVEMENT ESTIMATES(a), NSW

REGIONS IN SYDNEY (MSR)

Size of estimates	NSW	Sydney (MSR)	Balance of NSW (MSR)	Inner Sydney and Inner Western Sydney (SRs)	Inner Sydney (SR)	Eastern Suburbs (SR)	St George-Sutherland (SR)	Canterbury-Bankstown (SR)	Western Sydney (SRs)	Fairfield Liverpool and Outer South Fairfield-Liverpool (SR)
500	580	600	580	310	280	210	200	250	270	240
1 000	730	750	720	420	380	290	270	340	370	340
3 000	1 060	1 070	1 030	700	640	490	460	570	620	560
5 000	1 260	1 270	1 220	890	810	620	580	720	790	710
10 000	1 590	1 600	1 500	1 250	1 100	850	800	1 000	1 100	1 000
20 000	2 010	2 000	1 900	1 700	1 550	1 200	1 100	1 350	1 500	1 350
50 000	2 740	2 700	2 550	2 600	2 350	1 800	1 700	2 100	2 300	2 100
100 000	3 460	3 500	3 200	3 600	3 250	2 500	2 300	2 900	3 150	2 850
200 000	4 370	4 200	4 000	4 950	4 450	3 450	3 200	4 000	4 400	3 950
300 000	5 000	4 800	4 600	5 950	5 400	4 150	3 850	4 800	5 300	4 750
500 000	5 950	5 700	5 400	7 550	6 850	5 250	4 900	6 100	6 700	6 050
1 000 000	7 510	7 100	6 800	—	—	—	—	—	—	—
2 000 000	9 490	8 900	8 500	—	—	—	—	—	—	—
5 000 000	12 920	12 000	11 400	—	—	—	—	—	—	—

REGIONS IN SYDNEY (MSR)—continued

Size of estimate	Central Western Sydney (SR)	Outer Western Sydney (SR) and Blacktown (C)	Lower Northern Sydney (SR)	Hornsby-Ku-ring-gai (SR) and Baulkham Hills (A)	Northern Beaches (SR)	Gosford Wyong(SR)
500	210	280	250	180	220	220
1 000	290	390	340	250	300	310
3 000	480	650	570	420	500	520
5 000	600	820	720	540	630	650
10 000	850	1 150	1 000	750	850	900
20 000	1 150	1 550	1 400	1 000	1 200	1 250
50 000	1 750	2 400	2 100	1 550	1 850	1 900
100 000	2 450	3 300	2 900	2 150	2 500	2 650
200 000	3 350	4 550	4 000	3 000	3 500	3 650
300 000	4 050	5 500	4 850	3 600	4 200	4 400

REGIONS IN BALANCE OF NSW (MSR)

Size of estimate	Hunter (SR)	Newcastle (SRS)	Illawarra and South Eastern (SRS)	Illawarra (SR)	Wollongong (SRS)	Richmond-Tweed and Mid North Coast (SRs)	Northern, Far West and Central West (SRs)	Murray-Murrumbidgee (SR)
500	290	270	300	260	220	320	310	280
1 000	400	370	410	360	300	440	430	390
3 000	660	620	690	600	500	740	720	650
5 000	840	780	870	760	630	930	910	830
10 000	1 150	1 100	1 200	1 050	850	1 300	1 250	1 150
20 000	1 600	1 500	1 650	1 450	1 200	1 800	1 750	1 600
50 000	2 450	2 300	2 550	2 200	1 850	2 700	2 650	2 400
100 000	3 400	3 150	3 500	3 050	2 550	3 750	3 650	3 350
200 000	4 650	4 350	4 800	4 200	3 500	5 200	5 050	4 600
300 000	5 650	5 250	5 800	5 100	4 250	6 250	6 100	5 550

(a) Standard errors of month to month movements from October 1997–November 1999 onwards. For standard errors for earlier periods, see previous issues of this publication.

STANDARD ERRORS

STANDARD ERRORS, LEVEL ESTIMATES(a)— NSW AND ACT

<i>Size of estimate</i>	<i>ACT and South Eastern (SRs)</i>	<i>ACT</i>
500	280	210
1 000	390	270
3 000	620	400
5 000	770	500
10 000	1 020	600
20 000	1 340	800
50 000	1 910	1 200
100 000	2 500	1 650
200 000	3 200	2 250
300 000	3 700	2 700

(a) Standard errors of estimates from September 1997. For standard errors for earlier periods, see previous issues of this publication.

STANDARD ERRORS, MOVEMENT ESTIMATES(a) — NSW AND ACT

<i>Size of estimate</i>	<i>ACT and South Eastern (SRs)</i>	<i>ACT</i>
500	220	170
1 000	280	210
3 000	420	310
5 000	510	360
10 000	650	450
20 000	850	570
50 000	1 200	760
100 000	1 550	960
200 000	2 000	1 200
300 000	2 300	1 370

(a) Standard errors of month to month movements from October 1997–November 1999 onwards. For standard errors for earlier periods, see previous issues of this publication.

FOR MORE INFORMATION...

- INTERNET* **www.abs.gov.au** the ABS web site is the best place to start for access to summary data from our latest publications, information about the ABS, advice about upcoming releases, our catalogue, and Australia Now—a statistical profile.
- LIBRARY* A range of ABS publications is available from public and tertiary libraries Australia-wide. Contact your nearest library to determine whether it has the ABS statistics you require, or visit our web site for a list of libraries.
- CPI INFOLINE* For current and historical Consumer Price Index data, call 1902 981 074 (call cost 77c per minute).
- DIAL-A-STATISTIC* For the latest figures for National Accounts, Balance of Payments, Labour Force, Average Weekly Earnings, Estimated Resident Population and the Consumer Price Index call 1900 986 400 (call cost 77c per minute).

INFORMATION SERVICE

Data which have been published and can be provided within five minutes are free of charge. Our information consultants can also help you to access the full range of ABS information—ABS user-pays services can be tailored to your needs, time frame and budget. Publications may be purchased. Specialists are on hand to help you with analytical or methodological advice.

- PHONE* **1300 135 070**
- EMAIL* **client.services@abs.gov.au**
- FAX* 1300 135 211
- POST* Client Services, ABS, GPO Box 796, Sydney 1041

WHY NOT SUBSCRIBE?

ABS subscription services provide regular, convenient and prompt deliveries of ABS publications and products as they are released. Email delivery of monthly and quarterly publications is available.

- PHONE* 1300 366 323
- EMAIL* subscriptions@abs.gov.au
- FAX* 03 9615 7848
- POST* Subscription Services, ABS, GPO Box 2796Y, Melbourne 3001



2620110008017
ISSN 1322-0179

RRP \$24.00

© Commonwealth of Australia 2001

Produced by the Australian Bureau of Statistics